

FORT DRUM JOINT LAND USE STUDY

March 2, 2016

Jefferson Community College

AGENDA

- **Introductions**
- **What is a Joint Land Use Study?**
- **Why a Joint Land Use Study?**
- **Project Organization**
- **Public Participation**
- **Outcomes**
- **Timeline**

WHAT IS A JOINT LAND USE STUDY?

- A basic planning process designed to identify encroachment issues confronting both the civilian community and the military installation.
- Recommend strategies to address the issues in the context of local comprehensive/general planning programs.

WHAT IS A JOINT LAND USE STUDY?

PURPOSE

Promote compatible civilian development patterns near military installations by applying the local planning process to update local comprehensive/general plans and supporting land use regulations.

The Joint Land Use Study Program is community controlled and community directed.

WHAT IS A JOINT LAND USE STUDY?

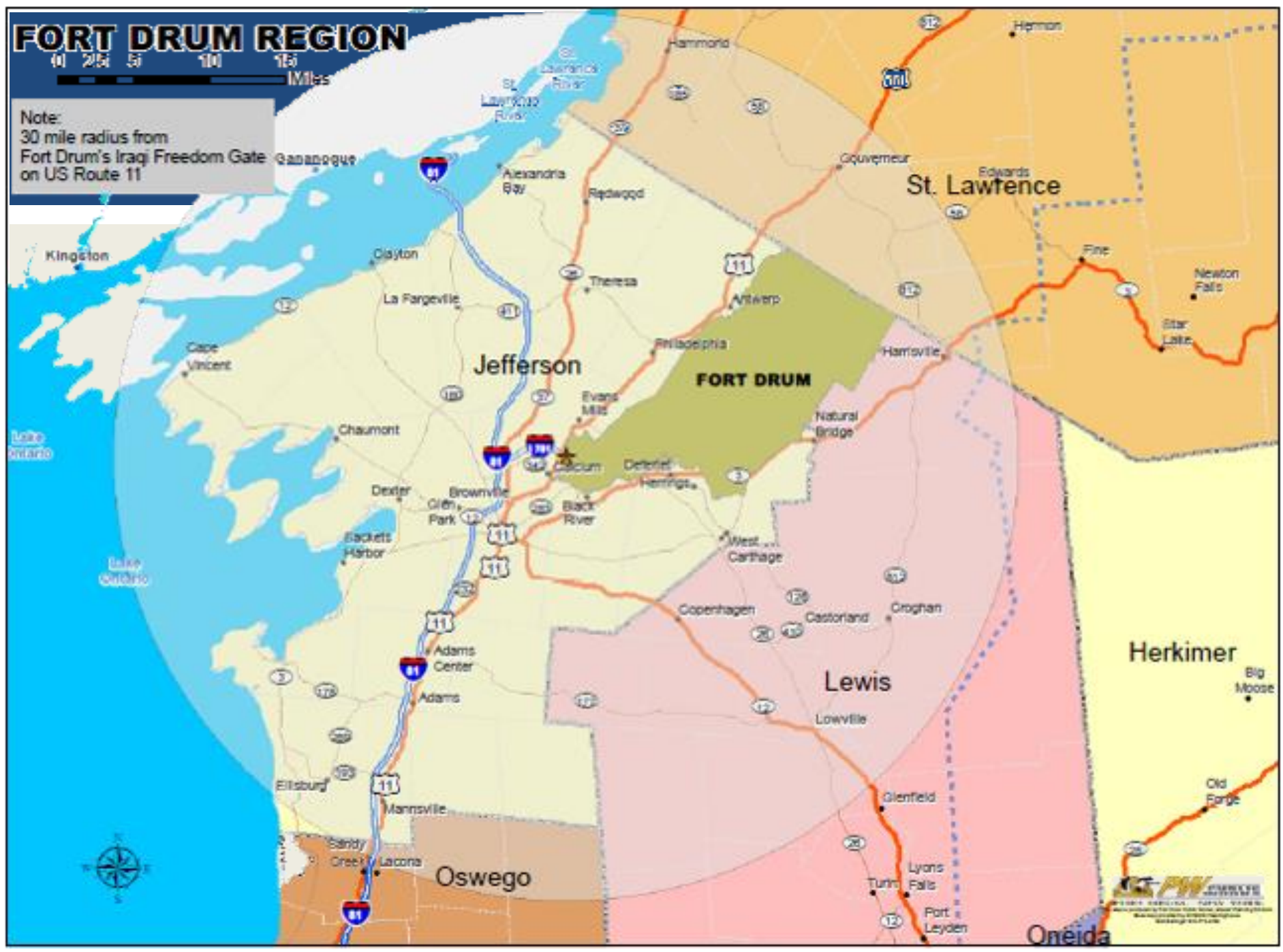
OBJECTIVES

- To encourage cooperative land use planning between military installations and the surrounding communities so that future civilian growth and development are compatible with the training or operational missions of the installation; *and*
- To seek ways to reduce the operational impacts on adjacent land.

FORT DRUM REGION

0 2.5 5 10 15 Miles

Note:
30 mile radius from
Fort Drum's Iraqi Freedom Gate
on US Route 11



WHY A JOINT LAND USE STUDY?

Economic impact of Fort Drum for Federal Fiscal Year (FFY) 2015:

- \$1,657.8 Billion in Gross Output
- \$1,165.5 Billion in Labor Earnings
- 25,287 Employed (both direct and indirect employment)

***Largest Single Site
Employer in NYS!***



WHY A JOINT LAND USE STUDY?

GROWTH MANAGEMENT STRATEGY

- Build on successes
- Sound planning practices
- Re-evaluate encroachment and compatibility issues since 2008.

FORT DRUM GROWTH MANAGEMENT STRATEGY



JANUARY 30, 2009

WHY A JOINT LAND USE STUDY?

Support Fort Drum mission which is home to the following:

- Active Army – 10th Mountain Division (L.I.)
- Wheeler-Sack Army Airfield
- National Guard and Army Reserve Training Facilities
- U.S. Army Forces Command Regional Collective Training Center
- Training Support
- Tenant Units

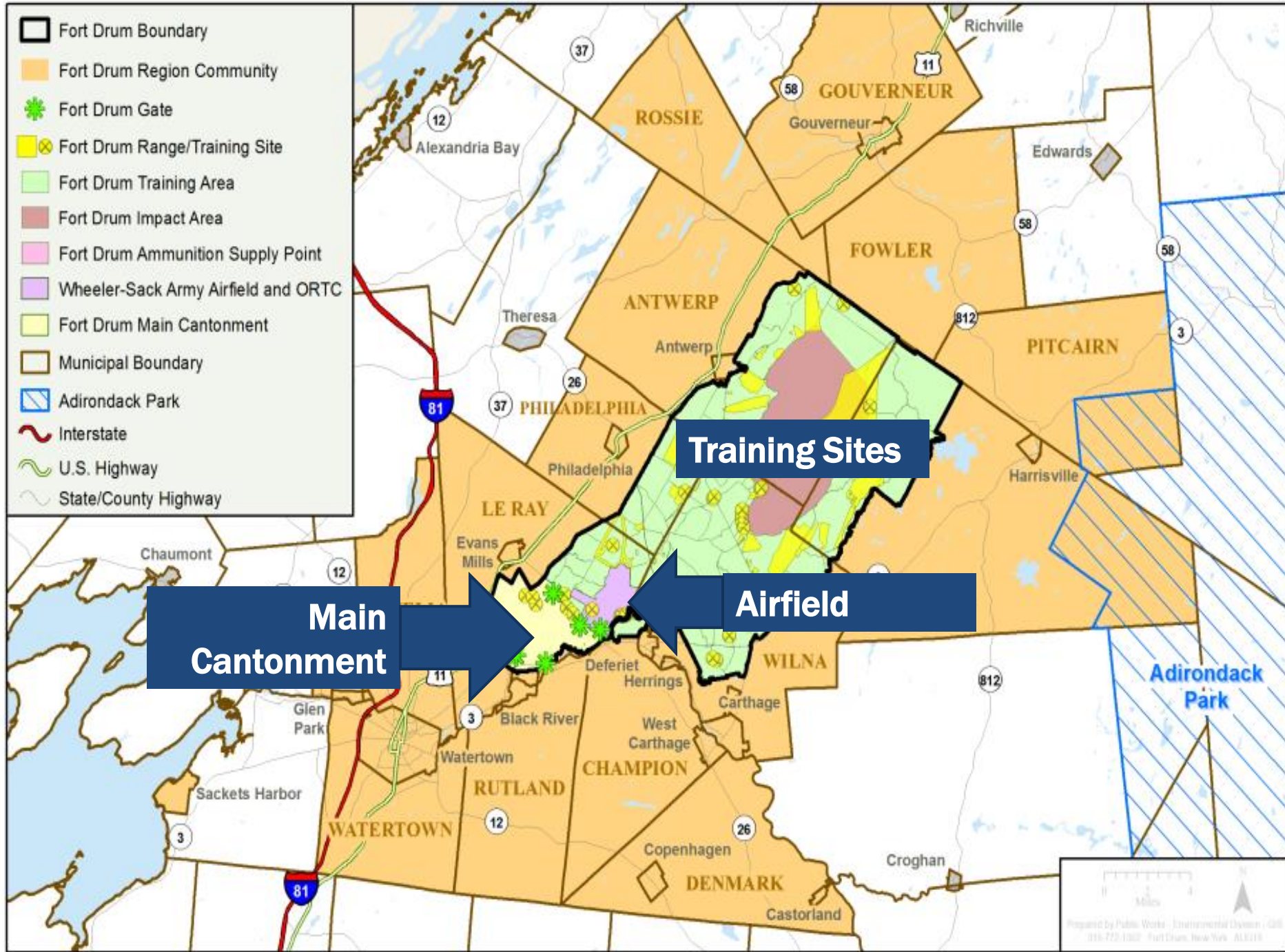


WHY A JOINT LAND USE STUDY?

Study encroachment and compatibility issues pertaining to Fort Drum's three main areas:

- **Cantonment Area – Comprised of administrative offices, housing, maintenance and troop support facilities.**
- **Training Area – Approx. 96,000 acres where majority of field and firing of weapons occurs.**
- **Wheeler-Sack Army Airfield**

-  Fort Drum Boundary
-  Fort Drum Region Community
-  Fort Drum Gate
-  Fort Drum Range/Training Site
-  Fort Drum Training Area
-  Fort Drum Impact Area
-  Fort Drum Ammunition Supply Point
-  Wheeler-Sack Army Airfield and ORTC
-  Fort Drum Main Cantonment
-  Municipal Boundary
-  Adirondack Park
-  Interstate
-  U.S. Highway
-  State/County Highway



**Main
Cantonment**

Training Sites

Airfield

FORT DRUM JOINT LAND USE STUDY

JLUS Will Address the Following:

- Siting of Energy Projects
- Airspace and Land Restrictions
- Noise Concerns
- Light Issues
- Spectrum Issues
- Urban Growth
- Security
- Water
- Cultural Resources
- Natural Factors,
- Endangered Species

FORT DRUM JOINT LAND USE STUDY

RENEWABLE ENERGY PROJECTS

- Identify ways to improve communication between Fort Drum and communities where projects are proposed.
- Fort Drum cannot stop a project however it can provide input to manage the project impacts on its operations and mission.



FORT DRUM JOINT LAND USE STUDY

ENCROACHMENT & INCOMPATIBLE DEVELOPMENT

- Impacts of noise concerns, light issues, and spectrum issues as they relate to training sites and the airfield.
- Accident Potential Zones (APZs) around the airfield and issues relating to development.
- Spectrum issues relating to wind and cell towers.

FORT DRUM JOINT LAND USE STUDY

Will evaluate the following, among others:

- Army Compatible Use Program and targeted areas for future projects.
- Future urban growth around Fort Drum.
- Endangered species like the Indiana brown bat and encroachment issues.

PROJECT ORGANIZATION

Responsibilities

Coordination
Accountability
Grant Management

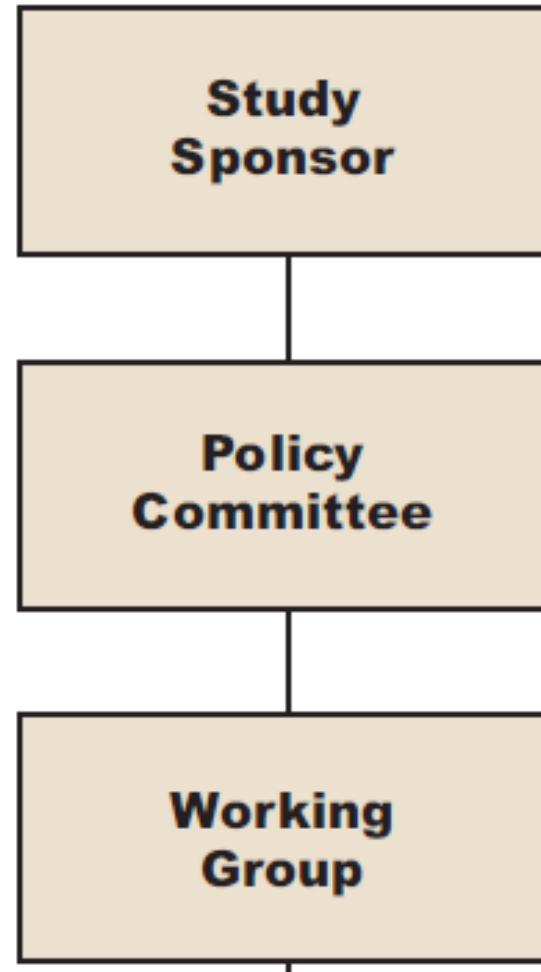
Policy Direction
Study Design/Oversight
Budget Approval
Monitoring
Report Adoption

Technical Issues
Alternatives
Report Development
Recommendations

**Study
Sponsor**

**Policy
Committee**

**Working
Group**



PROJECT ORGANIZATION

PROJECT SPONSOR

- Public Benefit Corporation created in 1985 by New York State legislature.
- Own and operate facilities and infrastructure that supports communities and Fort Drum.
- An essential community partner and provider of shared services to Fort Drum.



PROJECT ORGANIZATION

POLICY COMMITTEE

- Responsible for the overall direction of the JLUS, approval of the budget, preparation and approval of the study design, approval of draft and final written reports, approval of policy recommendations, and monitoring implementation of the adopted policies.

PROJECT ORGANIZATION

POLICY COMMITTEE

- Comprised of representation from the following:
 - Municipalities immediately adjacent to Fort Drum,
 - Fort Drum Garrison Commander,
 - Fort Drum Director of Planning, Training, Mobilization, and Security,
 - Fort Drum Director of Public Affairs,
 - Fort Drum Regional Liaison Organization,
 - Empire State Development.

PROJECT ORGANIZATION

TECHNICAL WORKING GROUP

- Reports to the Steering Committee.
- Responsible for identifying and studying technical issues, either independently or through the project subcontractor.

PROJECT ORGANIZATION

- **Technical Working Group** comprised of representation from the following:
 - 3-county planning offices,
 - City of Watertown planning office,
 - Town of LeRay planner,
 - Tug Hill Commission,
 - Tug Hill Tomorrow Land Trust,
 - Cornell Cooperative Extension,
 - ReEnergy,
 - FDRLO,
 - Fort Drum staff.

PUBLIC PARTICIPATION

- Elected officials within the 30-mile radius will receive regular correspondence as to the progression of the work plan.
- Public will have opportunity to attend public forums throughout the planning process and give public input.

OUTCOMES

- **Joint Land Use Study**
 - **Municipalities will adopt recommended guidelines for sound planning practices.**
 - **Municipalities will incorporate into existing comprehensive plans or future plans.**
 - **Fort Drum will utilize as a planning guide for future projects consistent with its mission.**

OUTCOMES

- **Community Liaison**
 - **Ms. Hartley Bonisteel-Schweitzer, Development Authority of the North Country Community Planner, will act as Community Liaison between Fort Drum and surrounding communities.**
 - **Assist with implementing guidelines and recommendations from the JLUS.**

OUTCOMES

- **Public Web Portol**
 - **GIS Interactive Mapping Application with public access to information gathered through this process.**
 - **Enhance site to be clearinghouse for information pertaining to development around Fort Drum.**
 - **Open to the public.**

TIMELINE

Release RFP	April 1, 2016
Interview Consultants	June 2016
Select Consultant	June 2016
Begin JLUS Project	July 2016
Complete Project	December 2017

CONTACT

Michelle L. Capone

Director of Regional Development

Development Authority of the North Country

(315) 661-3200

mcapone@danc.org

www.danc.org

