

Village of Harrisville

Dissolution Study

Existing Conditions: DPW and Highway Departments, Water Infrastructure,
& Village Street Lighting

3-21-17



Visit the website: www.danc.org/operations/engineering/village-harrisville-dissolution-study

Harrisville Department of Public Works

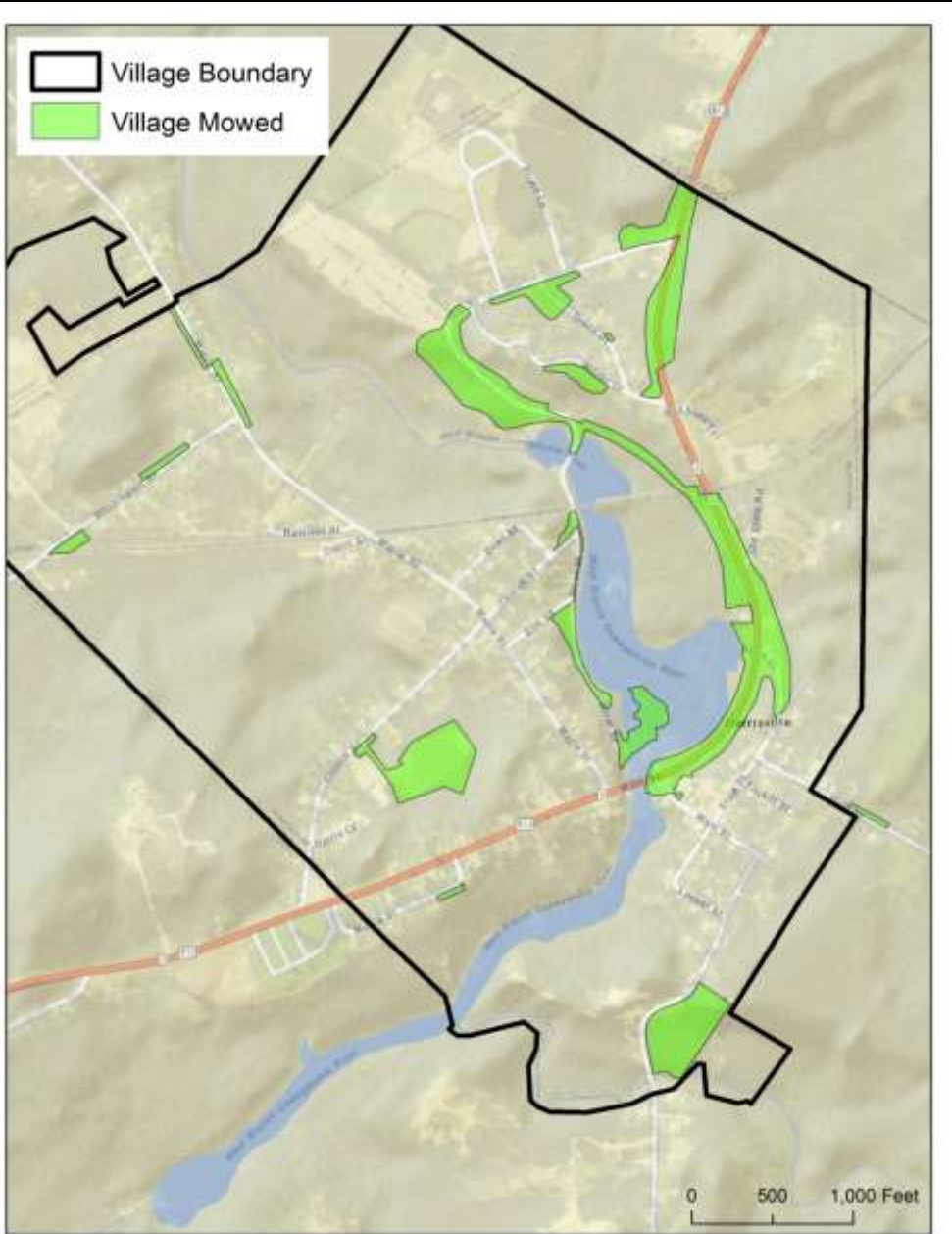
Two full time staff:

- Department of Public Works (DPW) Superintendent
- Motor Equipment Operator (MEO)

The DPW provides the following services to Village residents:

- Street lighting
- Grass mowing in common areas
- Snow plowing and removal
- Street maintenance
- Park maintenance
- Sidewalk replacement
- Maintenance of Village equipment and assets
- Other tasks as requested by Village Board

DPW - Grass Mowing in Common Areas



The DPW mow and weed-whack during the summer months.

The highlighted areas on the map are mowed and weed-wacked, including the 2 parks and the street sides.

DPW - Snow Plowing and Removal

Village Streets

- The Town plows all the Village streets with their large plows; no contract in place.
- The Village DPW uses a pickup truck with a plow, a Gehl skid steer tractor, and the backhoe/loader tractor to clean up the streets with more precision plowing and to remove the snow.

Parking Lots

- The Village DPW plows the following parking lots: Island Park, Ball Field and Ice Rink, Village Parking Lot, and the Fire Department lot.
- The Village Board has directed the DPW to plow church parking lots in the Village.
- The DPW will also remove snow for Village businesses, if requested.

Sidewalks

- The DPW removes snow from sidewalks along Main St., Locust St., Foskit St., High St., Maple St., Church St., and Elm St.
- DPW uses the Gehl skid steer tractor with the snow blower attachment for sidewalks

DPW - Street Maintenance

Street Paving

- There are 5.36 miles of Village streets
- The Town of Diana assists the Village with street paving by providing labor and trucks.
- The Village uses CHIPS funds to pay for materials and the paving crew.
- There is no formal agreement between the Village and Town of Diana for this paving assistance, and the Village does not currently pay the Town for the assistance. In exchange, the Village DPW will help the Town with tasks as requested.

Drainage Improvement

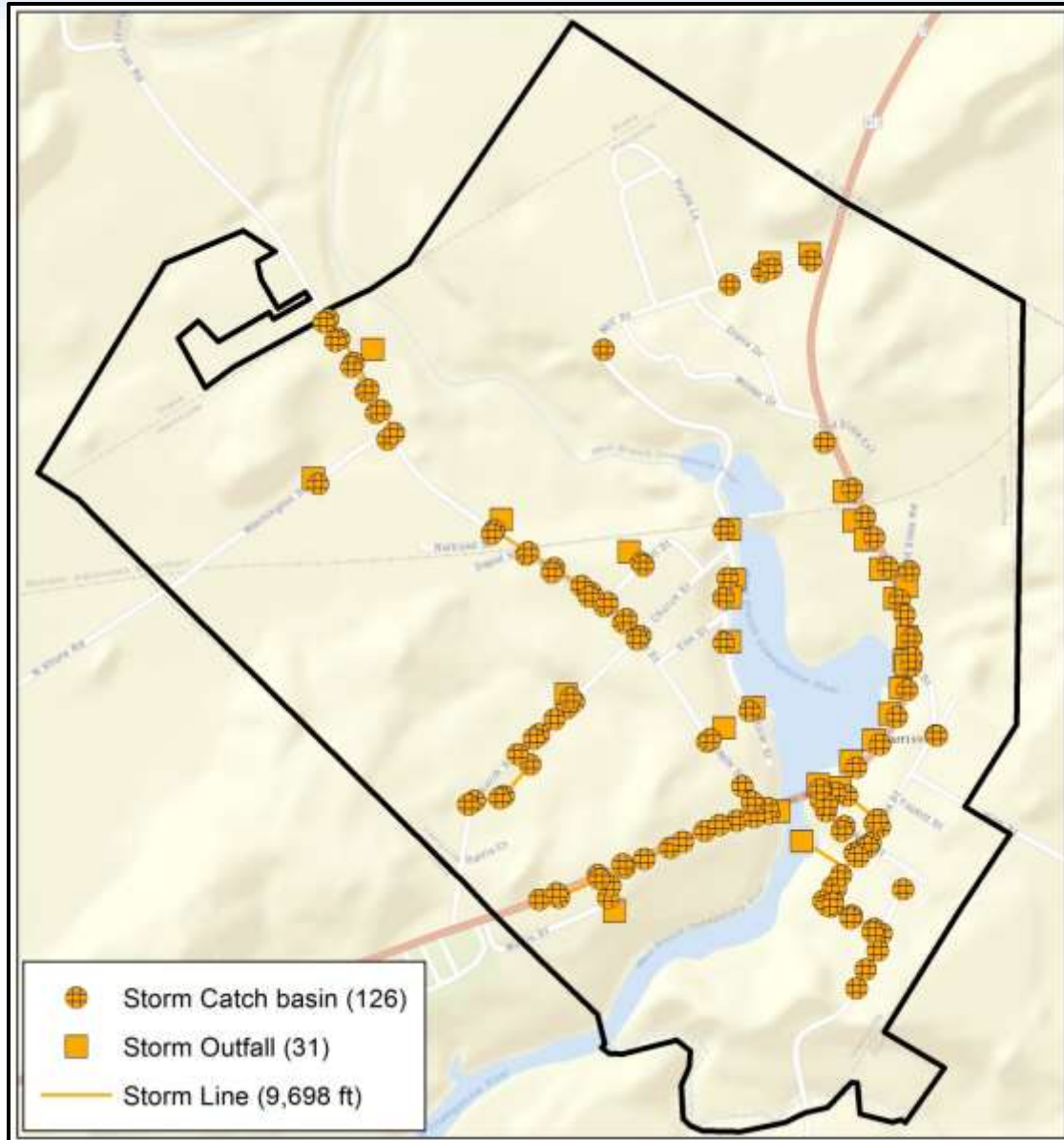
- Maintaining slopes of the street edges; cleaning around and inside Village street catch basins

Street cleaning - removing winter sand and debris

Removal of leaves branches and green waste from street sides

Street sign maintenance and replacement as needed

DPW - Street Maintenance: Storm Sewers



DPW staff maintain storm sewer catch basins on Village streets. They clean around catch basins and flush them out when needed.

The storm sewer system was mapped in GIS in 2014.

There are approximately 1.8 miles of storm sewers in the Village.

DPW - Park Maintenance

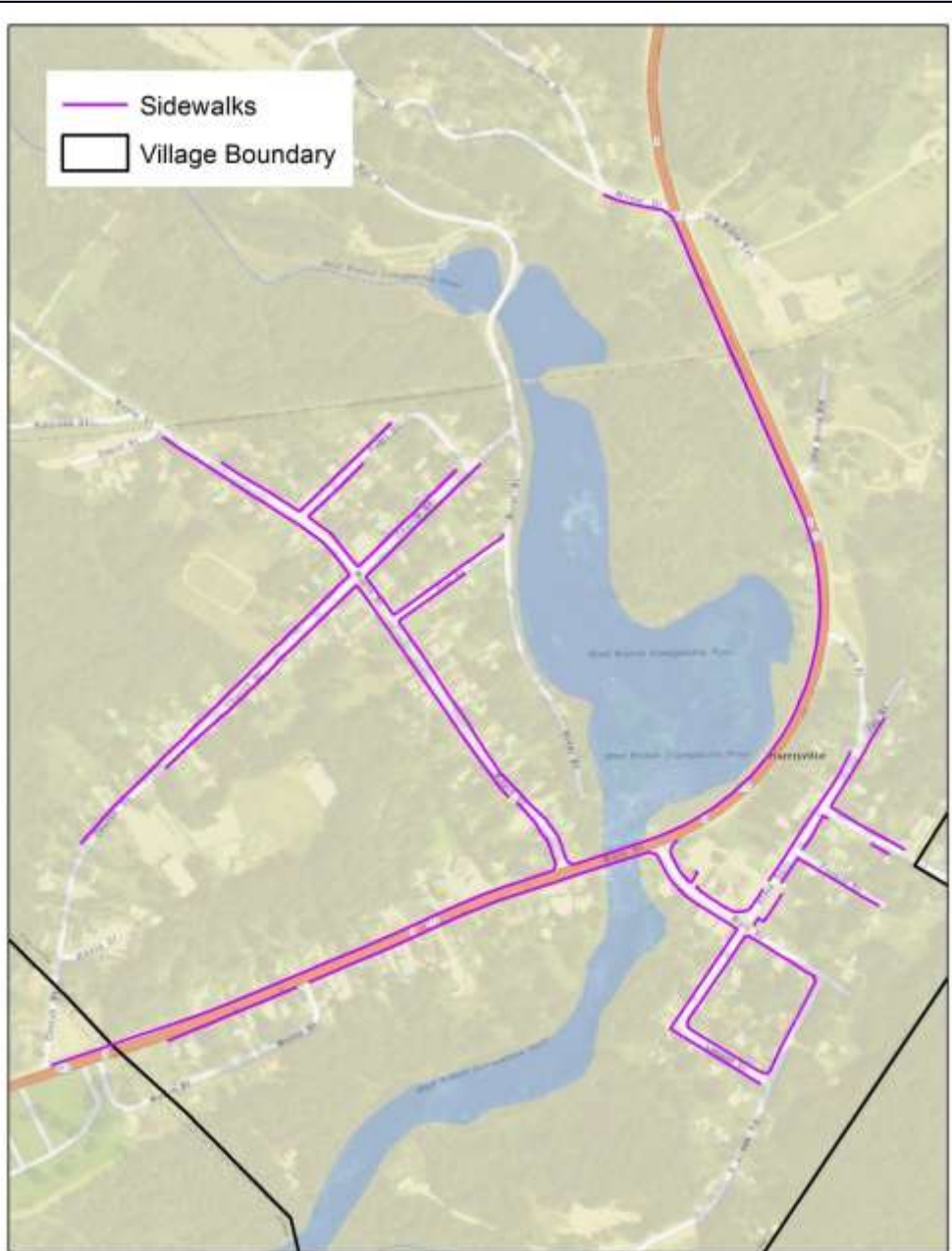
Grand View Island Park and the Recreation Park

Maintenance Includes:

- Cleaning and maintaining bathrooms, pavilion, gazebo, ice shanty
- Repairing benches and picnic tables
- Garbage pickup: 1-2 times per week (also includes parking lots)
- Mowing and weed-whacking
- Snow removal



DPW - Sidewalks



Property owners are responsible for the maintenance of the sidewalks in front of their property.

The Village has a sidewalk replacement program where the homeowner pays for the materials and the DPW will provide the labor.

The Village provides limited snow removal from sidewalks as time permits.

There are approximately 4 miles of sidewalks in the Village.

DPW - Other Services

Other services/duties of the DPW:

- Installing and removing 50 seasonal flags on utility poles
- Maintenance of Village equipment, buildings, and assets
- Assist with annual Community Festival
 - ❖ Approximately 2 ½ days of work to set up and break down event site
 - ❖ Pick up garbage
 - ❖ Drop off and pick up street barricades
 - ❖ Festival volunteers borrow the DPW generator, ladder, and small Utility Tractor with cart
- Other tasks as directed by Village Board

DPW - Buildings and Large Machinery

The Village DPW maintains the following buildings and large equipment:

Building	Address	Coverage Amount	
		Building	Contents
Water Pump Station	S. Creek Rd	\$15,000	\$5,900
Water Tower	S. Creek Rd	\$292,400	-
DPW Building	S. Creek Rd	\$120,000	\$1,000
Water House	Lower Maple St	\$7,600	\$5,900
Water Pump House	Washington St	\$13,000	-

Asset	Model Year	Insurance Coverage Amount
Compactor Tractor with Accessories	2001	\$19,000
Dump Truck	1995	\$38,000
Backhoe/Loader	2004	\$35,000
Gehl Skid Steer	2006	\$20,752
Ford Pickup w/Plow	2014	\$38,510

The Village does not have dedicated reserve funds for large equipment replacement. Insurance is a General Fund expenditure.

Village Water Infrastructure

Water Source: 1 main well and 2 auxiliary wells

Water Treatment: chlorinated in pump house prior to distribution

Two Active Water Storage Tanks: each has 200,000 gallon capacity

- Tank installed in 1979
- Tank installed in 1995
- One older abandoned tank

Max capacity of Village water system: 576,000 GPD (permitted day maximum)

Average Use: 85,000 - 90,000 GPD

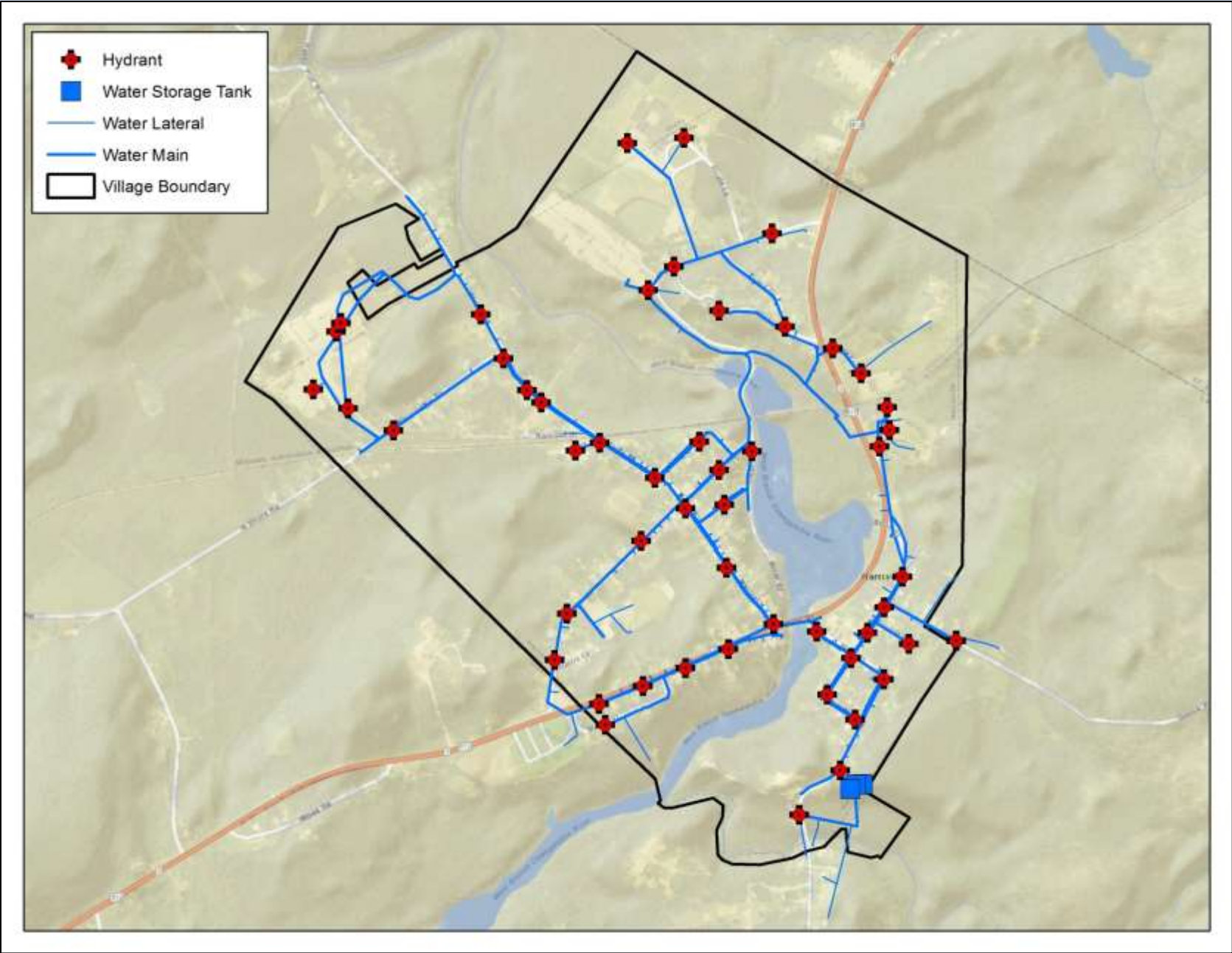
Current Water Rate: \$47/quarter, unlimited use

- The rate was increased from \$45/quarter in 2016

Water Distribution System was mapped with GIS in 2014

- 8.4 miles of water main
- 52 Hydrants
- 81 mainline valves
- 288 residential shutoff valves
- 21 Outside Users (water customers that are not in the Village)

Village Water Distribution Map



Village Water Infrastructure

The two DPW staff also serve as the Water staff:

- Both are certified with Class C and D licenses

Responsibilities:

- Monitor wells, pump houses, water treatment, and storage tanks
- Maintain and repair distribution system
- Respond to water emergencies (breaks, frozen pipes, etc.)
- Handle state reporting and regulatory requirements

Village Water Infrastructure

Currently, the Water Department has no debt

Upcoming Project:

Water main replacement on Church Street in 2017

➤ \$200,000 project budget:

- \$120,000 - NYS Water Grant
- \$80,000 - Village responsible

✓ The Village plans to incur \$25,000 in water debt and use fund balance for the remainder

Town of Diana Highway Department

The Town of Diana Highway Department has 5 full time employees:

- 1 Highway Superintendent (elected)
- 4 operators
 - Currently, the Town only has 3 operator positions filled
- The Town hires 1 seasonal employee in the summer and sometimes winter

The following services are applied to all Diana residents (Highway Town Wide):

- Snow removal: The Town plows all the roads in the Town, including the County roads, and the streets in the Village.
 - ❖ Town roads: 54.69 miles
 - ❖ County roads: 8.82 miles
 - ❖ Village streets: 5.36 miles

Total = 68.87 miles
- Town plows access road to cell towers and doctor's office parking lot
- Cemetery maintenance
 - ❖ Mowing and brush control for 3 Town-owned cemeteries

Town of Diana Highway Department

The following services are applied only to Diana Town Outside Village residents (Highway Part Town):

- Maintenance of Streets
 - ❖ Sweeping
 - ❖ Cutting shoulders
 - ❖ Gravel maintenance
 - ❖ Sign maintenance
 - ❖ Patching
 - ❖ Culvert maintenance

- Paving Town Roads

- Brush and Weed Control
 - ❖ The Town has a mowing and sweeping agreement with the County for County roads; no fees but there is an exchange of services
 - ❖ Town right-of-way tree trimming and removal
 - ❖ Mowing Town municipal office area and doctor's office area



Town of Diana Highway Department Buildings and Large Machinery

The Town Highway Department maintains the following buildings and large equipment:

Building	Limit of Insurance
Town Garage	\$407,907
New Storage Building	\$111,757
Cold Storage Building	\$102,752

Asset	Year	Limit of Insurance
Dump Truck	1978	\$5,000
Dump Truck	1992	\$15,000
Dump Truck	1996	\$20,000
Dump Truck	1999	\$30,000
Ford F350 Pickup	1989	\$2,500
Dump Truck w/Plow	2005	\$100,000
Bucket Truck	1983	\$5,000
Chevy Truck Pickup	2008	\$10,000
Dynaweld Trailer	1999	\$5,000
Plow Truck w/Sanders	2015	\$190,000
Ford Pickup w/ Plow	2015	\$33,000
Woods Ditch Rotary Mower	1998	\$6,240
Crawler Dozer	1985	\$13,000
Sweeper	1992	\$3,000

Asset	Year	Limit of Insurance
Galion Grader	2000	\$40,000
Caterpillar Loader	2015	\$147,706
Mower, boom and weights	-	\$15,000
JD 115/42	2006	\$500
Sander Box	2002	\$5,000
Ford 4630 Mowing Tractor	1994	\$5,000
Millematic 252	2008	\$1,000
7', 6" Fisher Plow for 2008 Pickup	2007	\$500
Woodchuck Hyroller Chipper	1993	\$9,700
Ingersoll Rand 185 Air Compressor	2003	\$5,000
BS Wacker Tamper	-	\$1,500
Olympian Generator	-	\$15,000
JD 6230 4x4 Tractor	2008	\$50,000
Tiger Bengal Mower	2009	\$30,000
Lord Screening Plant	-	\$15,000
Detroit Diesel Engine/Trailer Assembly for Screening Plant	-	\$5,000
Komatsu PC120-6 Excavator	1997	\$35,000

Village Street Lighting

Lighting is considered a Village service that is currently provided through a contract with National Grid for lighting management and maintenance.

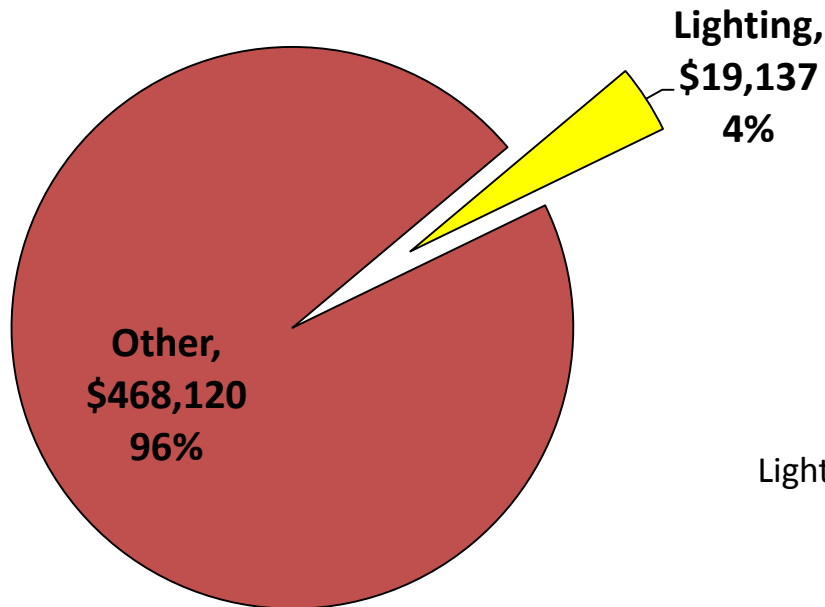
Street lighting is relevant to this dissolution study because if the Village were to dissolve, the Town would need to decide if it will create a lighting district for the area.

The Village DPW does not manage or maintain the street lights.

Village Street Lighting

- ❖ All Village residents are taxed for street lighting as part of their Village tax bill
- ❖ The cost of lighting was \$19,137 in the 2016 AUD
- ❖ DPW staff do not perform any tasks related to lighting; the Village's contract with National Grid covers maintenance of street lights.

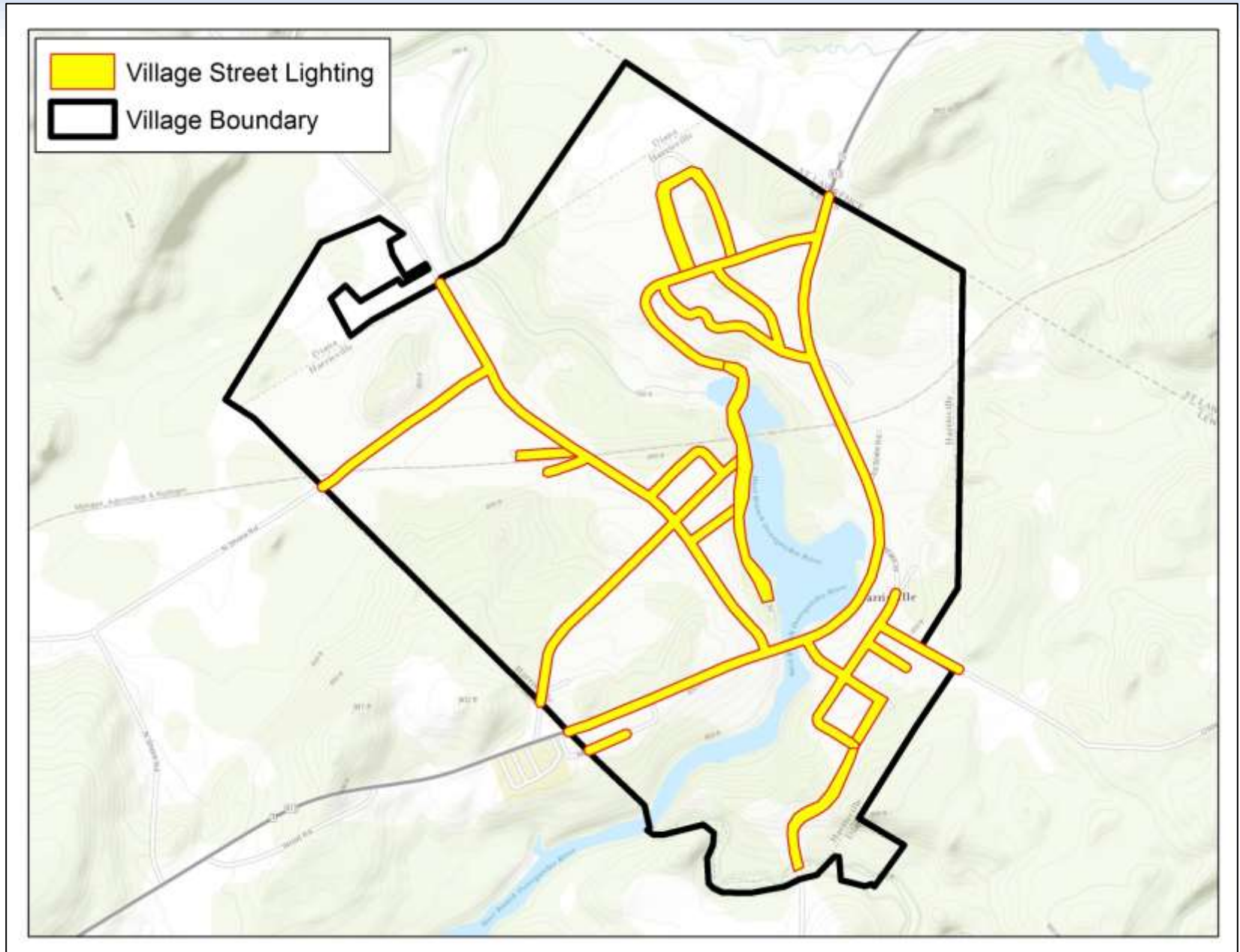
Lighting vs Overall 2016 AUD Expenditures



	Lighting	Other	Total
Village Tax	\$0.39	\$9.48	\$9.87

Lighting Tax Derived by:
 $\$9.87$ (2016 Village Tax) x 4% (% of General for Lighting)

Map of Village Street Lighting



Questions or Comments?



Carrie Tuttle, Director of Engineering

315-661-3259

ctuttle@danc.org

Star Carter, GIS Supervisor

315-661-3261

scarter@danc.org