

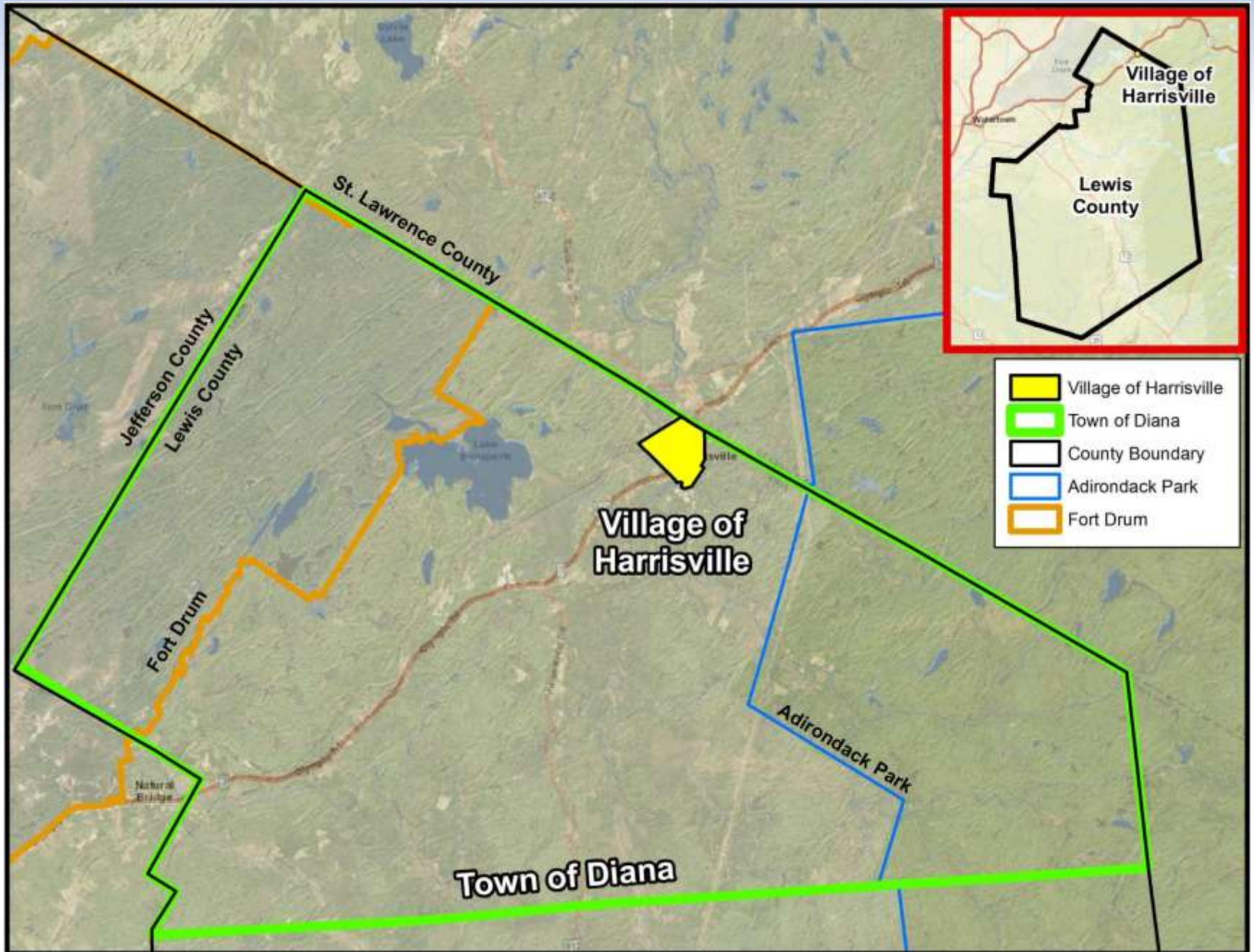
Village of Harrisville Dissolution Study

Population Trends, Demographics, & Socioeconomics



Visit the website: www.danc.org/operations/engineering/village-harrisville-dissolution-study

Location Map



Harrisville, NY

Village History

- ❖ In 1833, Foskit Harris acquired land along the Oswegatchie River from Joseph Bonaparte. He constructed a sawmill and gristmill along the river.
- ❖ By 1880, Harrisville was the commercial and industrial center of the Town of Diana. At its height, the Village supported a chair factory, a sash and door factory, several lumber dealers, carriage makers, blacksmiths, a harness shop, and numerous merchandise stores and retail services. A large paper mill continued to provide economic significance until its closure in the 1950's.
- ❖ The Harrisville Dry Kiln plant closed in 2013. The remaining major industry and employers in the Village include Viking Cives, Inc., a maker of snow plows, the Central School District, and a couple of small businesses (convenience stores, restaurants, etc.).
- ❖ Harrisville is located along the Route 3 Olympic Byway and is a significant contribution to this tourism corridor; providing services and resources to travelers.
- ❖ Harrisville has not conducted a formal study looking into Village dissolution in the past; however the question of the whether dissolution would positively impact Village taxpayers has been brought up in recent years by Village residents, prompting this dissolution study.

Lewis County Villages by Population (2010 Census data):

Village	Population
Lowville	3,470
Copenhagen	801
Port Leyden	672
Harrisville	628
Croghan	618
Lyons Falls	566
Castorland	351
Constableville	242
Turin	232

Lewis County Towns by Population (2010 Census data):

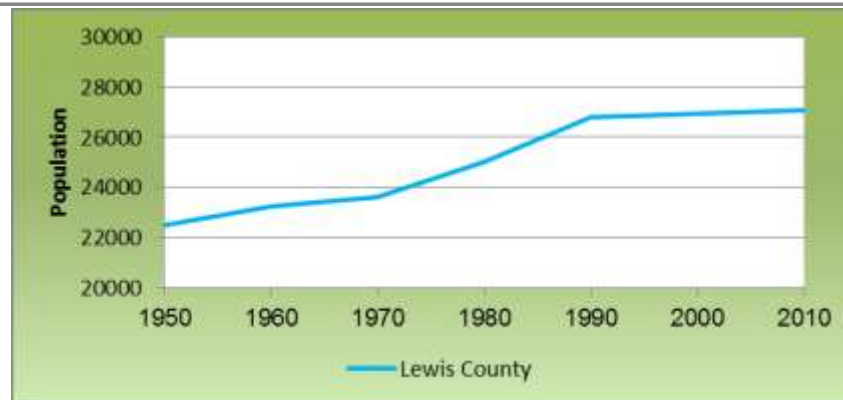
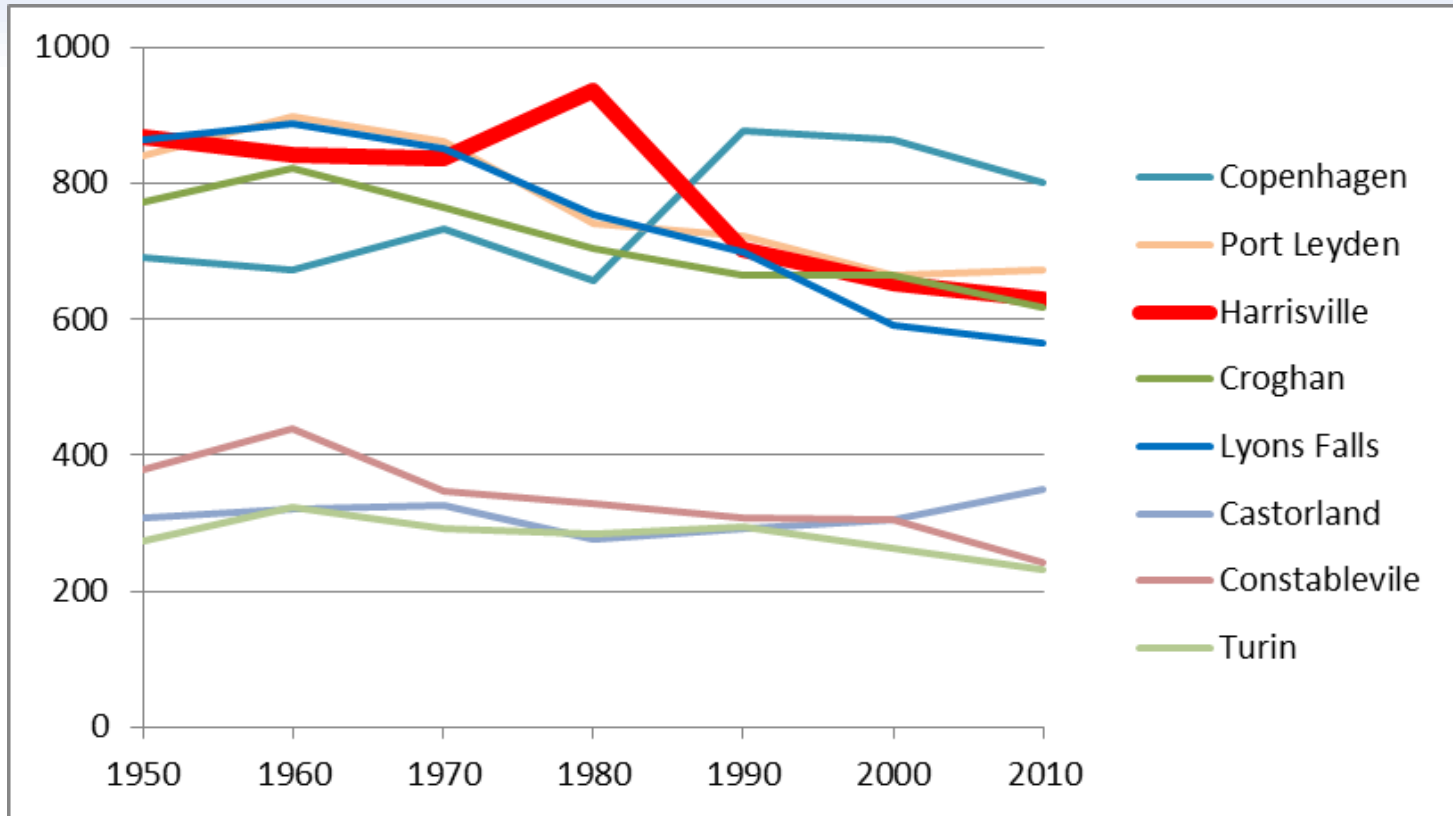
Town	Population
New Bremen	2,706
Croghan	2,475
Denmark	2,059
Watson	1,881
Leyden	1785
Lowville	1,512
Martinsburg	1,433
Lyonsdale	1,227
Greig	1,199
Diana	1,081
Lewis	854
West Leyden	852
Turin	529
Harrisburg	437
Pinckney	329
Osceola	229
Montague	78

Census Population Data

Harrisville and Diana Populations, 1950-2010			
	Harrisville	Diana	Total
1950	868	849	1,717
1960	842	799	1,641
1970	836	813	1,649
1980	937	772	1,709
1990	703	1,040	1,743
2000	653	1,008	1,661
2010	628	1,081	1,709

Population Trends Since 1950

Lewis County Villages under 1,000 people in 2010 Census



What happened in the 1980's?

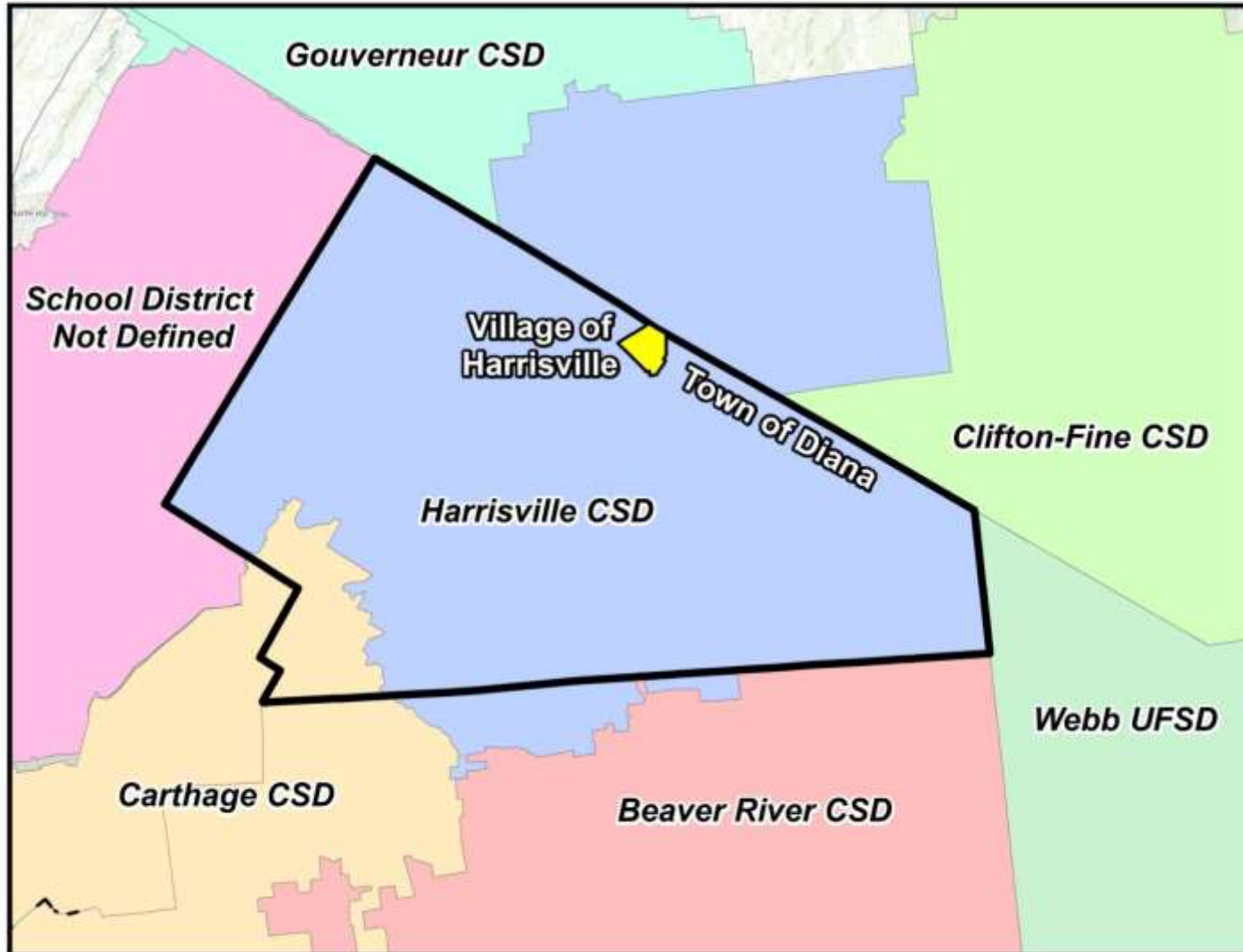
The dramatic population loss between 1980 and 1990 may be attributed to the closings of J&L and Benson Mines in the Clifton-Fine area, resulting in many jobs lost and people leaving the area to find other work. Harrisville was not the only community affected:

Other Local Municipal Populations, 1980-1990					
	Harrisville	Clifton	Fine	Edwards	Piercefield
1980	937	1,005	2,243	1208	365
1990	703	917	1,813	1083	285

Note: the Village of Copenhagen saw a dramatic increase in population in the 1980's, attributed to the construction of Section 801 Housing in Copenhagen and 200+ Fort Drum Army families moving in.

School Districts

The dissolution study will have no impact on either school or County taxes, since these are separate from Village and Town taxes. Information about the school districts serving the Village of Harrisville and the Town of Diana is for reference purposes only.



School Districts

The dissolution study will have no impact on either school or County taxes, since these are separate from Village and Town taxes. Information about the school districts serving the Village of Harrisville and the Town of Diana is for reference purposes only.

District	Population 2000	Population 2010	Change	% Change
Lowville CSD	8,334	8,762	428	5.10%
Harrisville CSD	2,307	2,350	43	1.90%
Copenhagen CSD	2,890	2,872	-18	-0.60%
Beaver River CSD	5,624	5,548	-76	-1.40%
South Lewis CSD	7,066	6,803	-263	-3.70%
Clifton-Fine CSD	2,408	2,257	-151	-6.30%

It is interesting to note that the Harrisville CSD was the only district besides Lowville CSD to have an increase in school population.

Population Demographics - Income 2010

Municipality	Median Household Income	Percentage "All People" Below Poverty Line
Village of Port Leyden	\$31,417	21.40%
Village of Croghan	\$31,694	14.70%
Village of Castorland	\$34,063	32.90%
Village of Harrisville	\$36,019	12%
Village of Turin	\$37,614	2.40%
Village of Lowville	\$40,872	17.80%
Village of Lyons Falls	\$41,250	6.80%
Town of Diana	\$42,664	13.40%
Lewis County	\$42,846	14.60%
Village of Copenhagen	\$43,977	9.70%
Village of Constableville	\$55,694	10.30%

Notes about Census Poverty Statistics:

- Poverty threshold in 2010 varied from \$10,458-\$48,527 depending on how many people lived in a household (1 person to 9 or more)
- Census poverty threshold is set nationwide and does not vary geographically

Real Property Statistical Information

2016 Assessed Values

The dissolution study committee will review the real property in the Village and the Town to analyze municipal-owned property, State-owned property, seasonal residences, tax-exempt property, total assessed values, and other details that are pertinent to the study.

The tables below highlight a few preliminary details about the Village and Town Real Property.

Real Property Assessed Values All Parcels within Village or Town	Harrisville 2016 350 Total Parcels	Diana 2016 1,847 Total Parcels
Total Taxable Assessed Value	\$18,311,037	\$167,842,302
Highest Assessed Value (Property Owner)	\$2,100,000 Harrisville Central School - Tax Exempt \$750,000 Fortis Energy Group	\$15,494,921 Iroquois Gas Transmission System
Average Assessed Value	\$64,746	\$85,860
Median Assessed Value	\$54,250	\$54,400

Real Property Statistical Information

Preliminary Parcel Details

Real Property 2016	Harrisville	Diana
Seasonal Residence Parcels (Property Class 260)	0	261
State-Owned Parcels	2	148
USA Fort Drum Parcels	0	9
Municipal-Owned Parcels	10 Village-owned 7 Town-owned	1 Village-owned 2 Town-owned
Tax Exempt Parcels	35	42

Dissolution Study Meetings and Topics

Meeting	Month
#1 Kickoff and Demographics	January 17
#2 What Exists: Municipal Financials	February 21
#3 What Exists: Dept. of Public Works, Water Dept., & Highway Dept.	March 21
#4 What Exists: Fire Department	April 18
#5 What Exists: Municipal Officials & Employees	May 16
#6 Draft Existing Conditions Report	June 20
#7 Public Meeting #1 - Existing Conditions	July 18
#8 Alternatives	August 15
#9 Draft Alternatives Report	September 19
#10 Public Meeting #2 - Alternatives	October 17
#11 Final Dissolution Report and Plan	November 21
#12 Public Hearing (if recommended by committee)	December 19

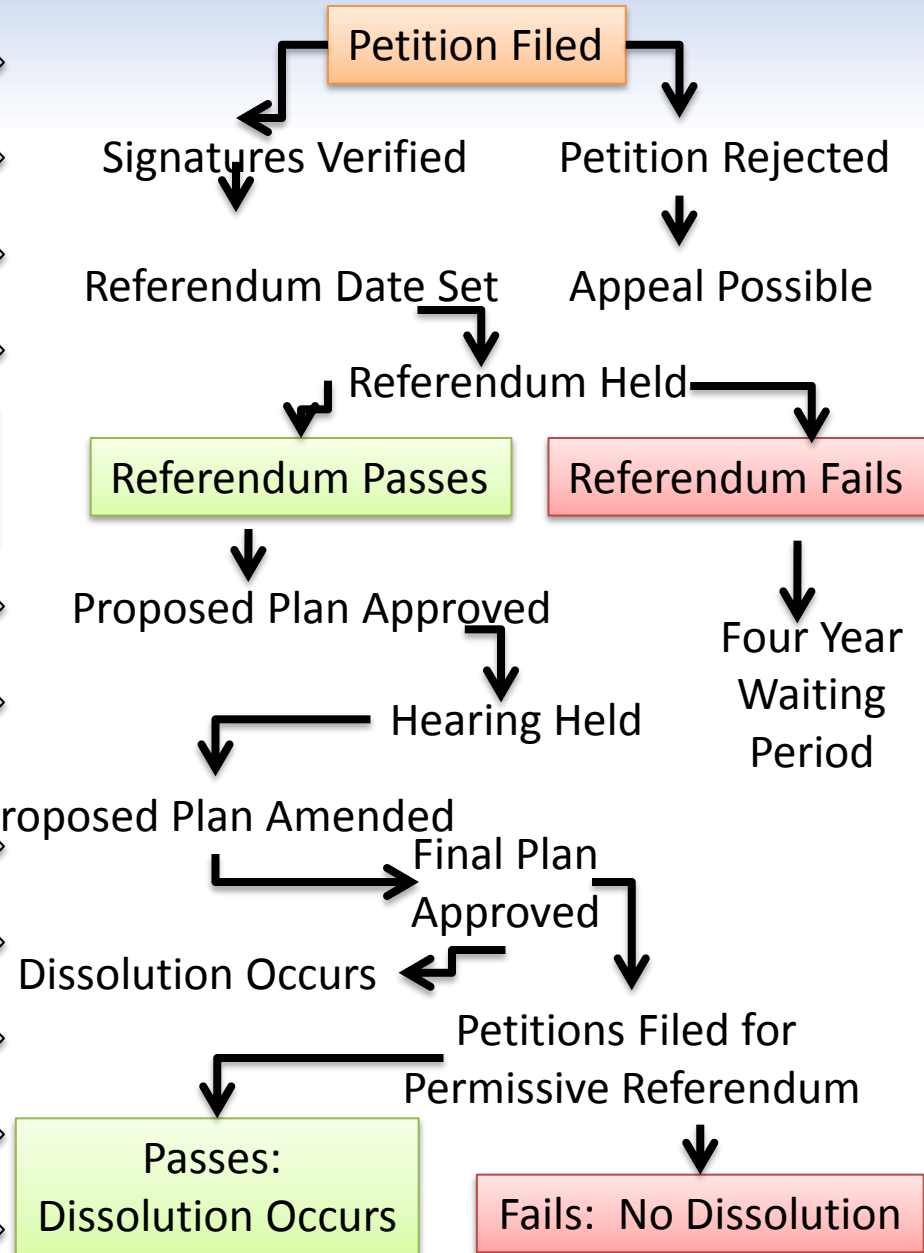
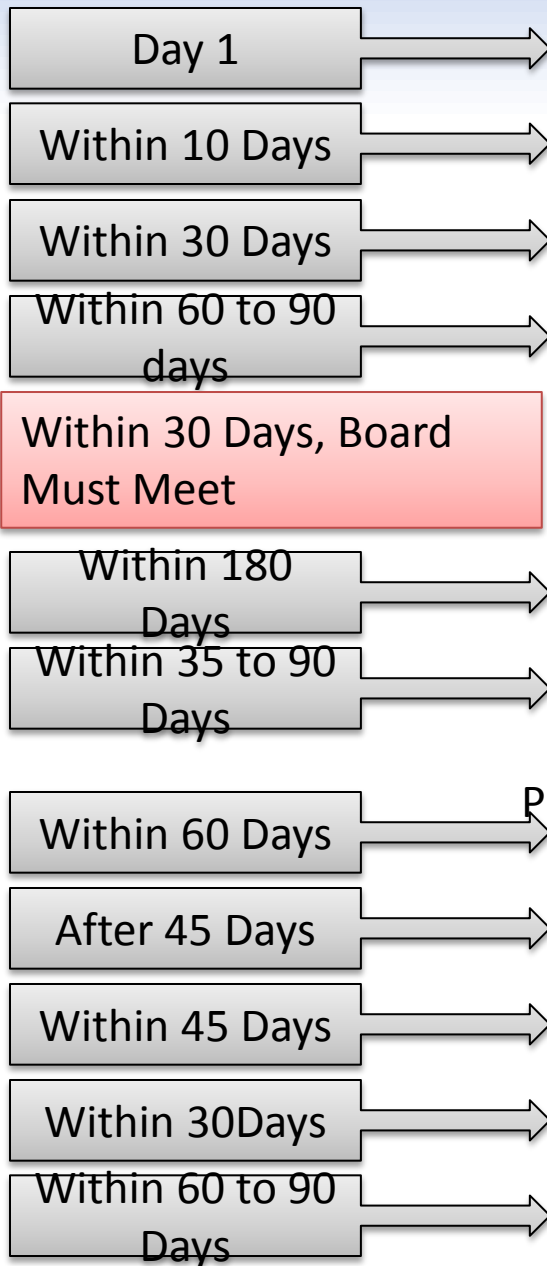
Department of State

Robert Roeckle, Local Government Specialist

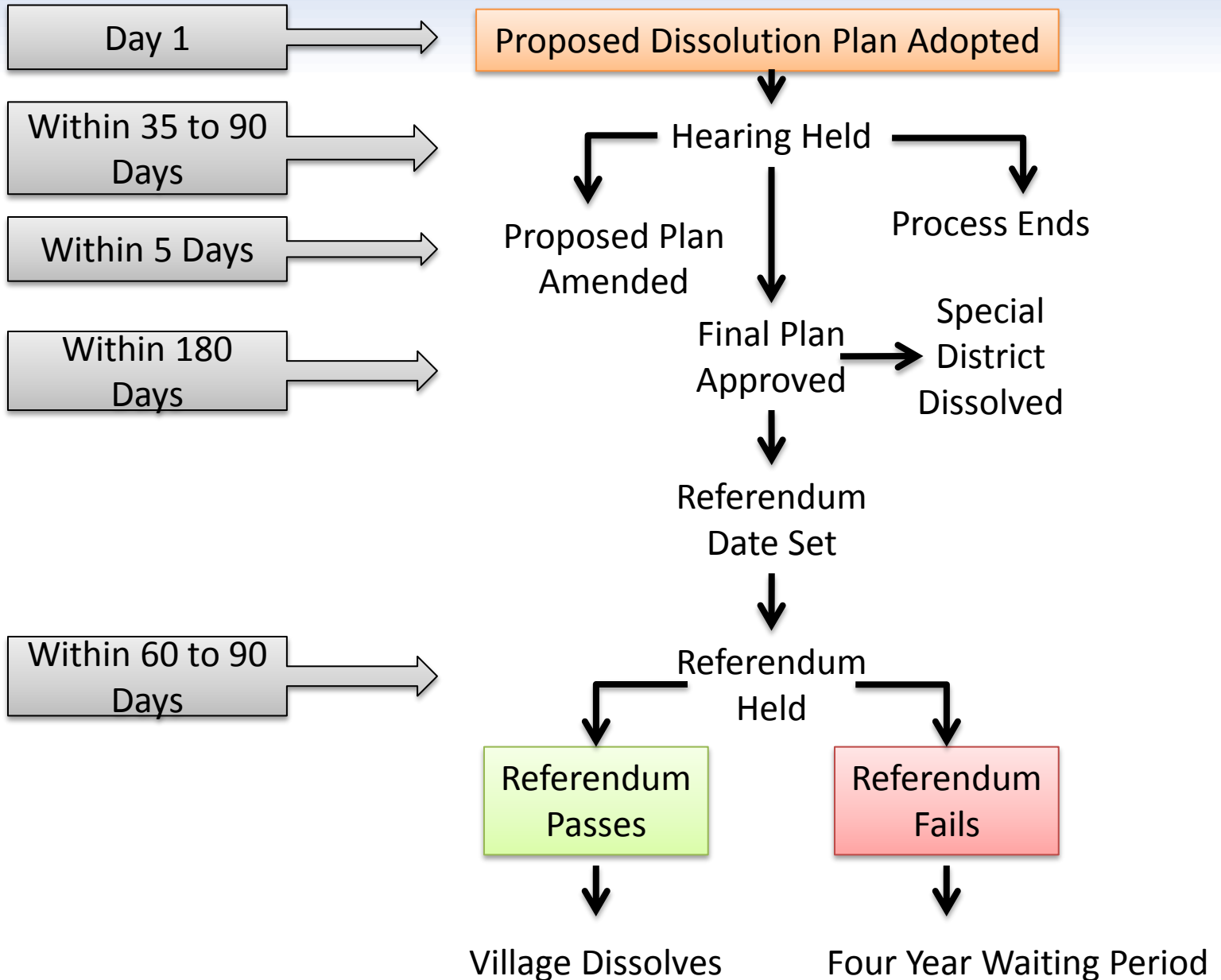
Municipal Dissolution Processes:

Voter initiated vs. Board initiated

Voter-Initiated Dissolution



Board-Initiated Dissolution Process



Potential Citizens Empowerment Tax Credit

- The Citizens Re-Organization Empowerment Grant (CREG) program assists local governments with dissolution or consolidation. Local governments that complete a municipal re-organization project are eligible for the Citizens Empowerment Tax Credit (CETC). This funding is a separate source of additional annual aid that is awarded in amounts equal to 15% of the combined real property taxes levied by all of the cities, towns, and villages that participated in the re-organization.
- The CETC will be calculated from the tax levies for the last full fiscal year prior to dissolution. The numbers below are only an estimate.

	Village 6/1/17- 5/30/18	Town 1/1/17- 12/31/18	Total
2017 Tax Levy	\$175,633	\$661,465	\$837,098
Potential Annual Citizens Empowerment Tax Credit (CETC) 15% of Total Tax Levy	-	-	\$125,564*

* 70% of CETC must be used to reduce property taxes.

The CETC is one source of savings from dissolution. The purpose of this dissolution study is to look at alternatives to current municipal services and service delivery that may result in additional savings.

Questions or Comments?



Carrie Tuttle, Director of Engineering
315-661-3259
ctuttle@danc.org

Robert Roeckle, Department of State
518-486-4669
Robert.Roeckle@dos.ny.gov

Star Carter, GIS Supervisor
315-661-3261
scarter@danc.org