

# **Village of Morristown**

## **Dissolution Study**

Population Trends, Demographics, & Socioeconomics  
2-28-17



Visit the website: [www.danc.org/operations/engineering/morristown-dissolution-study](http://www.danc.org/operations/engineering/morristown-dissolution-study)

# Village of Morristown Dissolution Study - Introductions

## **Morristown Study Committee Members**

John Barse

Phil Barse

Mark Blanchard

Chris Coffin

Diane LaRock

Jay Moore

John Newtown

Cheryl Shatraw

Michele Whalen

Don Woods

## **Consultant: Development Authority of the North Country**

Carrie Tuttle - Director of Engineering

Star Carter - GIS Supervisor

## **Department of State: Local Government Specialist**

Kevin Schwenzfeier

# Department of State Work Plan

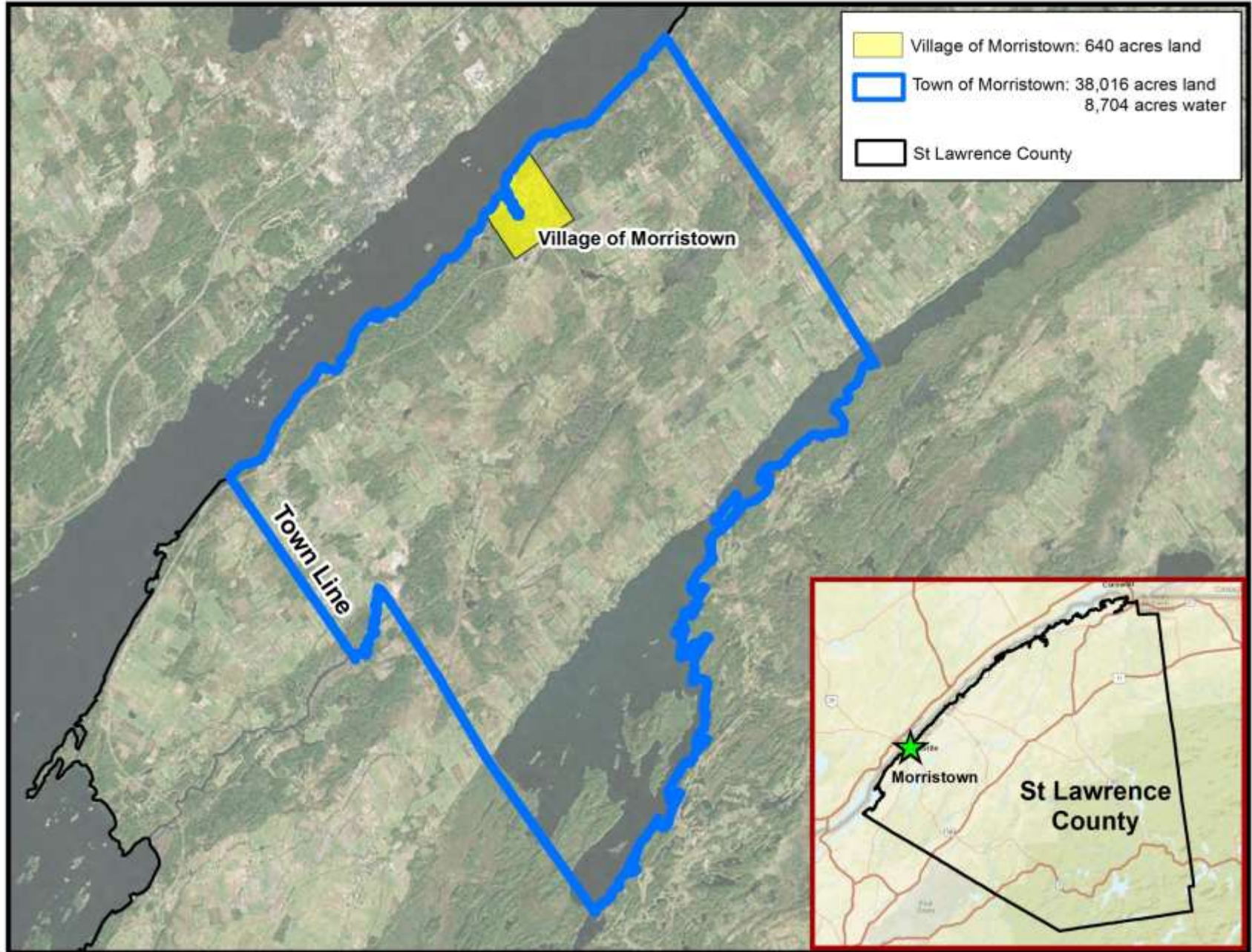
The Village of Morristown applied to the Department of State (DOS) for grant funding to conduct a Village Dissolution Study. The following Work Plan has been approved by DOS and is available for review on the Dissolution study website at: [www.danc.org/files/public/Morristown/DOSMorristownContractWorkPlan.pdf](http://www.danc.org/files/public/Morristown/DOSMorristownContractWorkPlan.pdf)

Phase	Description
<b>Existing Conditions</b>	Provide a foundation for the project in the form of an Existing Conditions Report that details the current municipal services and how they are delivered, financials, assets, and other details for the Village and Town.
<b><i>Public Meeting #1</i></b>	The Dissolution Study Committee will hold a public meeting to review the draft Existing Conditions Report with the public.
<b>Alternatives</b>	Analyze and develop possible alternatives to Village municipal service delivery, up to and including Village dissolution, that achieve cost savings and efficiencies in Village operations in the form of an Alternatives Report and Dissolution Plan (if recommended by committee).
<b><i>Public Meeting #2</i></b>	The Dissolution Study Committee will hold a public meeting to review the draft Alternatives Report and draft Dissolution Plan with the public.
<b>Final Report</b>	The Existing Conditions Report, Alternatives Report, and Dissolution Plan will be finalized by the Dissolution Study Committee and presented to the Village and Town Boards.
<b><i>Public Hearing</i></b>	The Final Dissolution Study Report will be presented to the public by the Village and Town Boards.

# Dissolution Study Meetings and Topics

Meeting	Month
#1 Kickoff and Demographics	February 28
#2 What Exists: Municipal Financials	March 28
#3 What Exists: Municipal Officials & Employees	April 25
#4 What Exists: Fire Department	May 23
#5 What Exists: Dept. of Public Works & Highway Dept.	June 27
#6 Draft Existing Conditions Report	July 25
#7 Public Meeting #1 - Existing Conditions	August 22
#8 Alternatives	September 26
#9 Draft Alternatives Report	October 24
#10 Public Meeting #2 - Alternatives	November 28
#11 Final Dissolution Report and Plan	December 26
#12 Public Hearing (if recommended by committee)	January 23, 2018

# Location Map



# Morristown, NY

## Village History

- ❖ Morristown has not conducted a formal study looking into Village dissolution in the past; however the question of whether dissolution would positively impact Village taxpayers has been brought up in recent years by Village residents, prompting this dissolution study.
- ❖ The land where Morristown exists was originally purchased by Alexander Macomb but later sold to his attorney, Gouverneur Morris which is where Morristown gets its name. The first settlers of the town began the community around 1804, but the village was not permanently settled until 1808.
- ❖ The Village is located on the St. Lawrence River, opposite the Canadian Village of Brockville. Most of Morristown's early economy was based on the proximity to the River, with naval stores and a variety of mills providing the bulk of the jobs. An early naval battle of the War of 1812 occurred in waters in front of the Village.
- ❖ Today, the majority of the Village's employed residents work in either education, health care, and social assistance or retail trade, and the average commute time to work is 22 minutes, with a vast majority of working residents remaining in St. Lawrence County for their employment.

# St. Lawrence County Villages by Population (2010 Census data):

Village	Population
Hammond	280
Richville	323
Rensselaer Falls	332
<b>Morristown</b>	<b>395</b>
Hermon (former Village, dissolved 1-1-17)	422
Edwards (former Village, dissolved 1-1-12)	439
Heuvelton	714
Waddington	927
Norwood	1,657
Gouverneur	3,949
Canton	6,314
Potsdam	9,428
Massena	10,936

## St. Lawrence County Towns by Population (2010 Census data):

Town	Population
Clare	105
Piercefield	310
Clifton	751
Pitcairn	846
Rossie	877
Macomb	906
DePeyster	998
Hopkinton	1,077
Hermon	1,108
Edwards	1,156
Hammond	1,191
Colton	1,451
Fine	1,512
Madrid	1,735
Lawrence	1,826
Russell	1,856

Town	Population
<b>Morristown</b>	<b>1,974</b>
Parishville	2,153
Fowler	2,202
Waddington	2,266
DeKalb	2,434
Brasher	2,512
Pierrepont	2,589
Louisville	3,145
Stockholm	3,665
Lisbon	4,102
Oswegatchie	4,397
Norfolk	4,668
Gouverneur	7,085
Canton	10,995
Massena	12,883
Potsdam	16,041

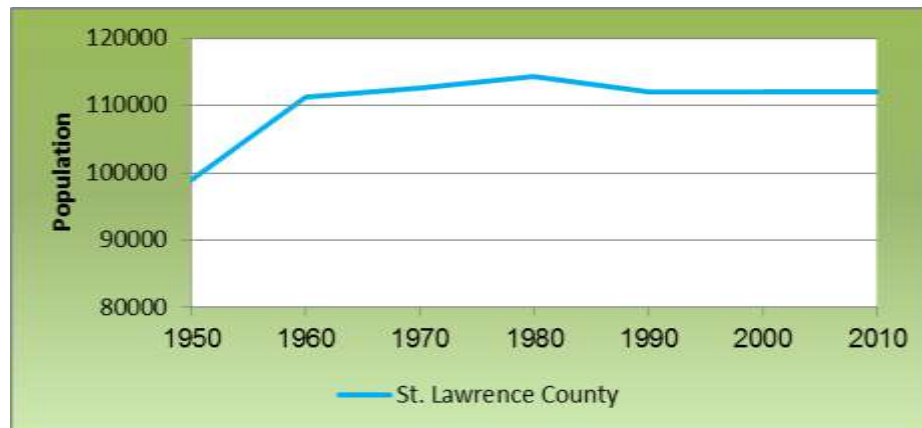
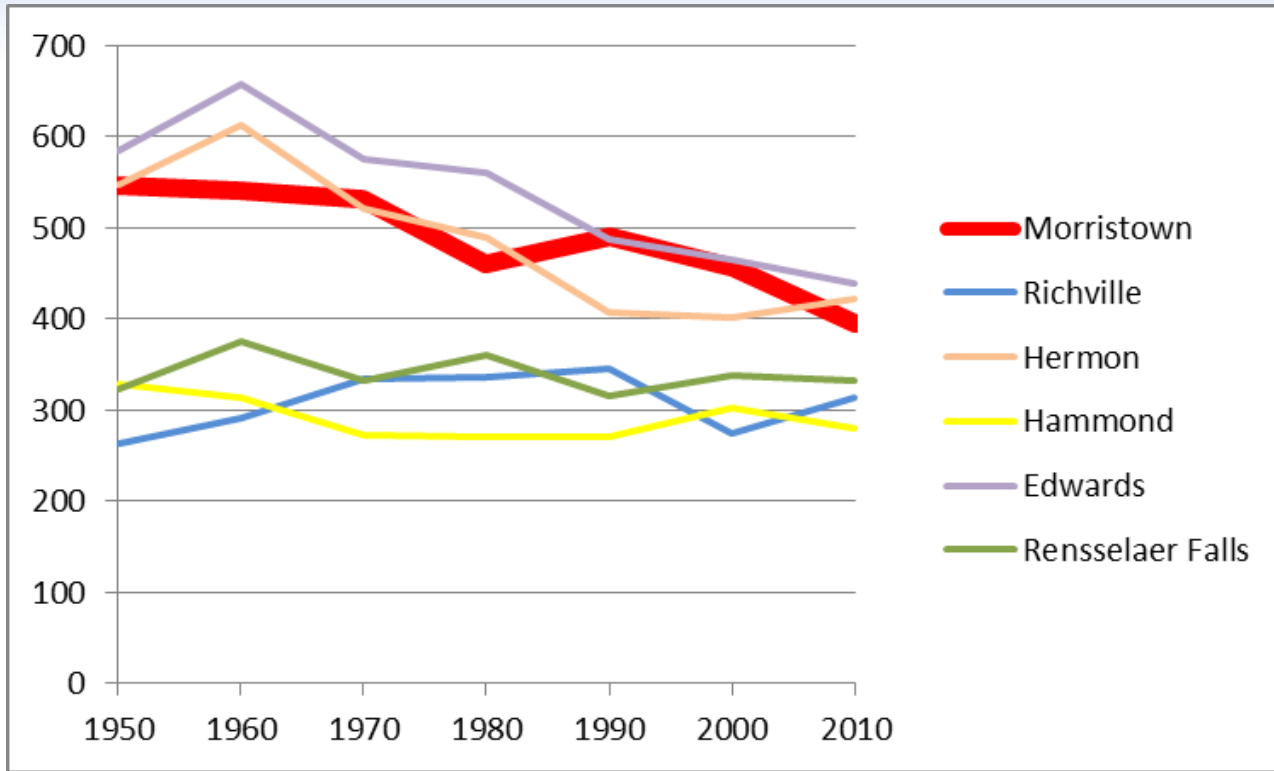


# Census Population Data

<b>Village and Town Populations, 1950-2010</b>			
	<b>Village Morristown</b>	<b>Town Morristown</b>	<b>Total</b>
<b>1950</b>	546	1,023	1,569
<b>1960</b>	541	1,235	1,776
<b>1970</b>	532	1,291	1,823
<b>1980</b>	461	1,460	1,921
<b>1990</b>	490	1,529	2,019
<b>2000</b>	456	1,594	2,050
<b>2010</b>	395	1,579	1,974

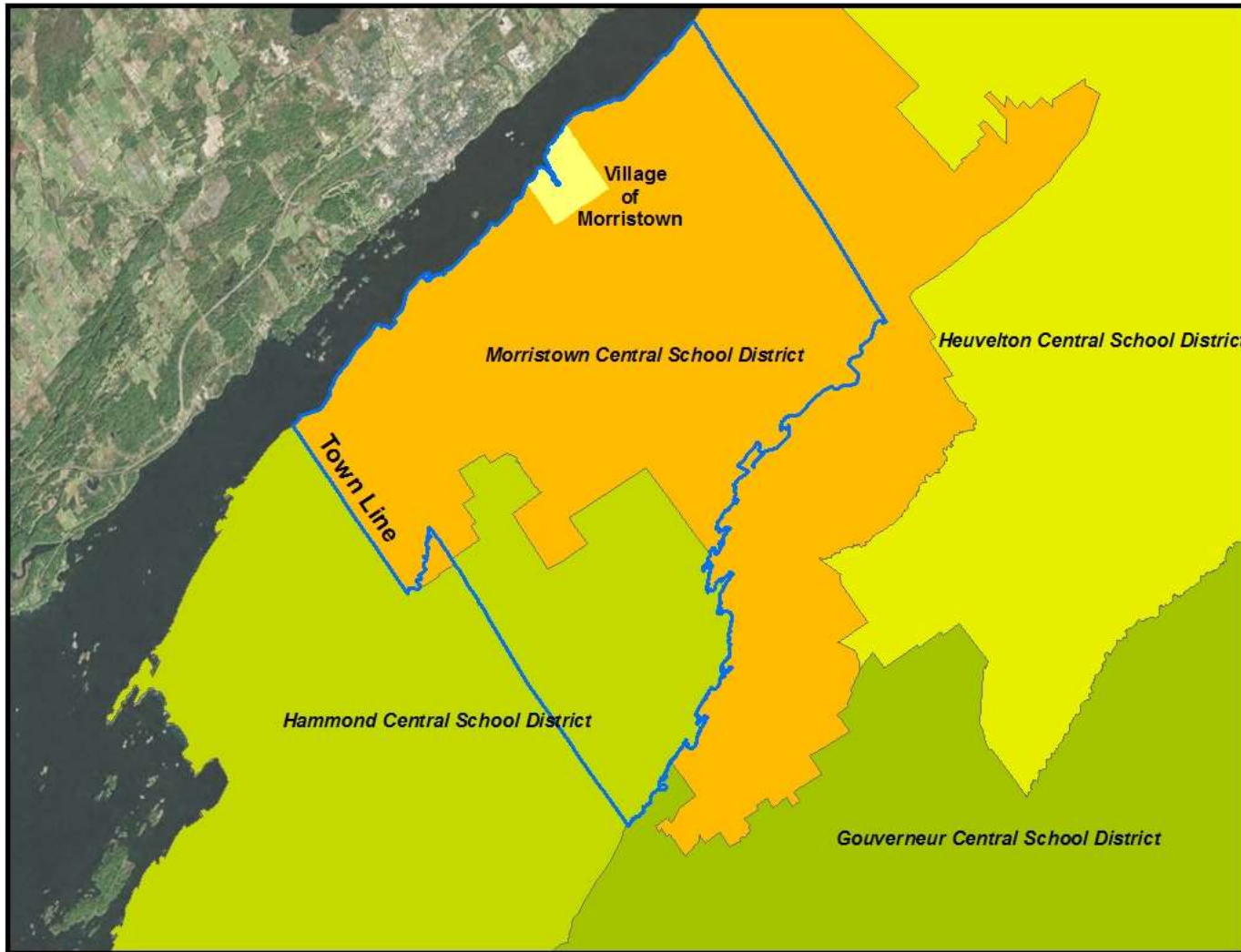
# Population Trends Since 1950

## St. Lawrence County Villages under 500 people in 2010 Census



# School Districts

The dissolution study will have no impact on either school or County taxes, since these are separate from Village and Town taxes. Information about the school districts serving the Village of Morristown and the Town of Morristown is for reference purposes only.



# Population Demographics - Income 2010

## Notes about Census Poverty Statistics:

- Poverty threshold in 2010 varied from \$10,458-\$48,527 depending on how many people lived in a household (1 person to 9 or more)
- Census poverty threshold is set nationwide and does not vary geographically

## St. Lawrence County Villages

Municipality	Median Household Income	Percentage "All People" Below Poverty Level
<b>Village Morristown</b>	<b>\$48,750</b>	<b>20.8%</b>
<b>Town Morristown</b>	<b>\$48,482</b>	<b>24.5%</b>
St. Lawrence County	\$42,303	16.9%
Potsdam	\$23,144	37.2%
Richville	\$42,500	26.5%
Massena	\$38,371	19.9%
Norwood	\$38,083	19.7%
Edwards (former Village)	\$38,393	18.9%
Heuvelton	\$43,810	17.4%
Hammond	\$32,143	14%
Waddington	\$36,538	13.2%
Canton	\$53,111	11.9%
Gouverneur	\$42,641	10.9%
Hermon	\$40,417	9.7%
Rensselaer Falls	\$73,750	5.1%

# Real Property Statistical Information

## 2016 Assessed Values

The dissolution study committee will review the real property in the Village and the Town to analyze municipal-owned property, State-owned property, seasonal residences, tax-exempt property, total assessed values, and other details that are pertinent to the study.

The tables below highlight a few preliminary details about the Village and Town Real Property.

<b>Real Property Assessed Values All Parcels within Village or Town</b>	<b>Morristown (V) 2016 359 Village Parcels</b>	<b>Morristown (T) 2016 1,846 Town Parcels</b>
Total Taxable Assessed Value	\$26,904,277	\$181,154,792*
Highest Assessed Value Property Owner	\$2,311,500 Morristown Central School - <b>Tax Exempt</b> \$660,400 Village of Morristown - <b>Tax Exempt</b> \$550,000 B. Woodcock	\$1,101,289 Niagara Mohawk Power Corp
Average Taxable Assessed Value	\$73,372	\$83,739
Median Taxable Assessed Value	\$50,800	\$56,600

\* Town Total Taxable Assessed Value includes the Village parcels taxed by the Town

# Real Property Statistical Information

## Preliminary Parcel Details

Real Property 2016	Morristown (V)	Morristown (T)
Seasonal Residence Parcels (Property Class 260)	17	389
State-Owned Parcels	0	3
Fish and Wildlife Service	0	3
Municipal-Owned Parcels	17 Village-owned 3 Town-owned	0 Village-owned 7 Town-owned
Tax Exempt Parcels	35	33

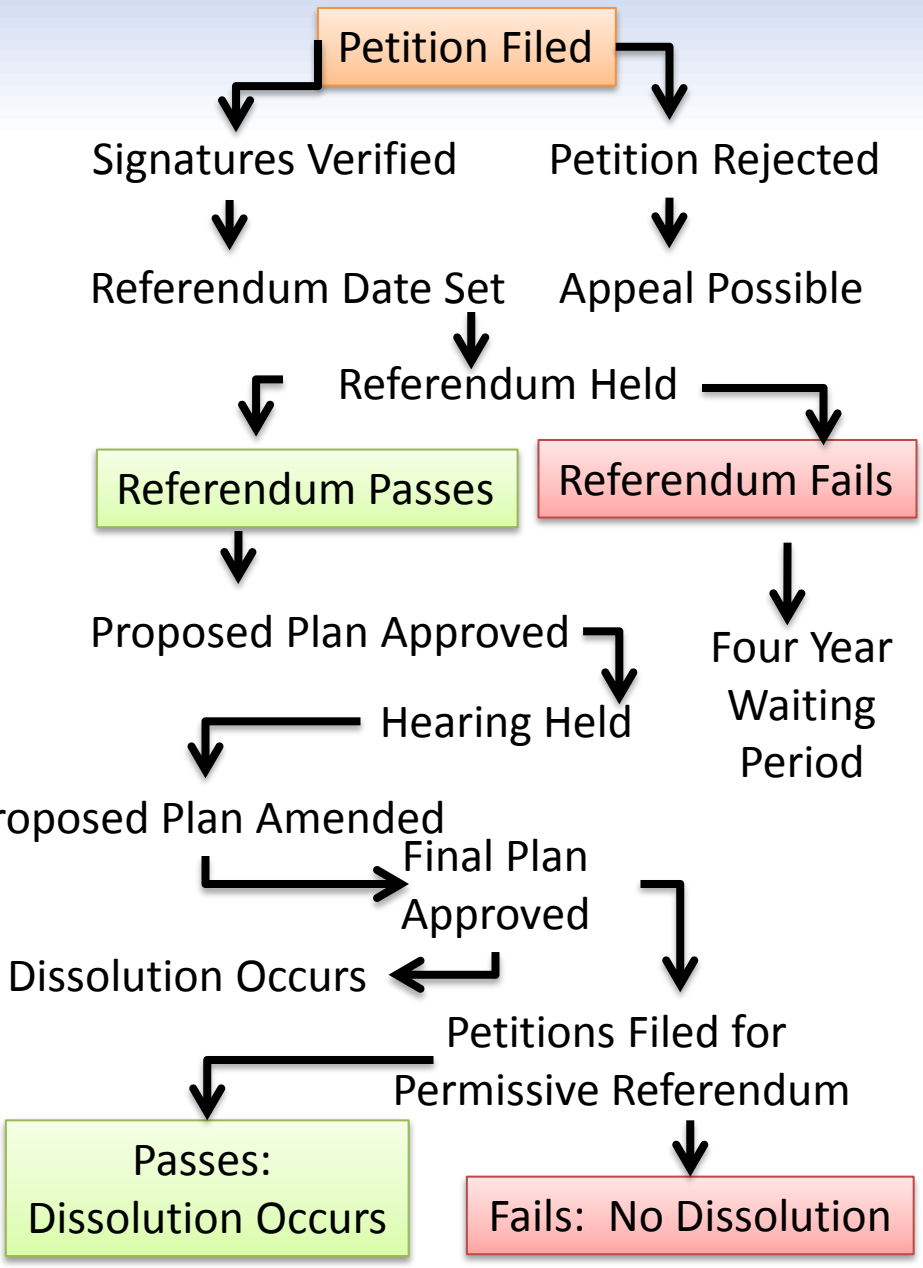
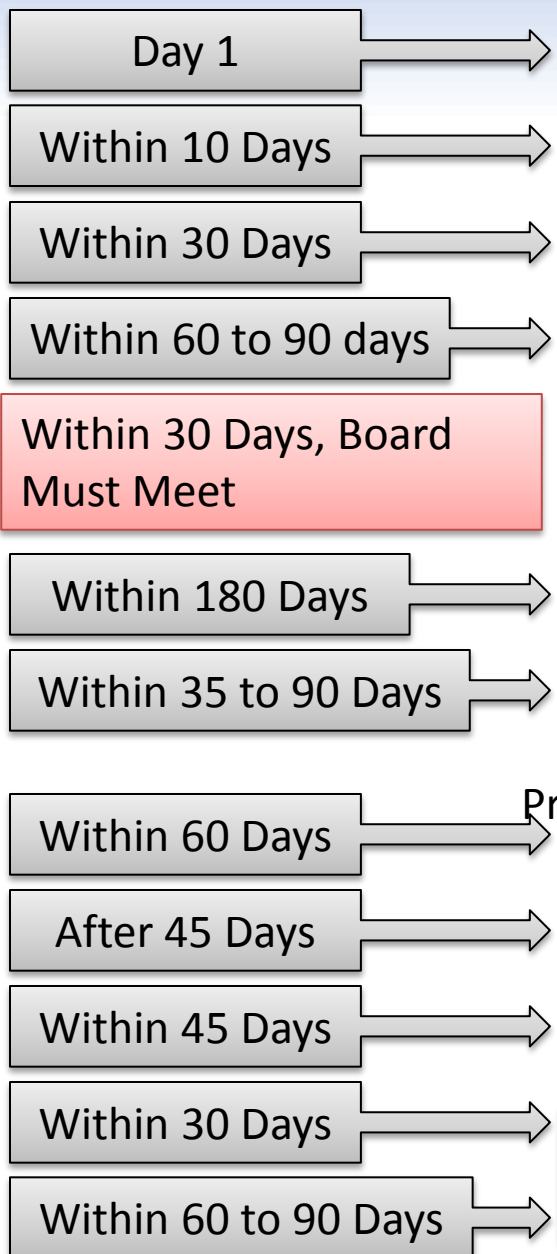
# Department of State

**Kevin Schwenzfeier, Local Government Specialist**

## Municipal Dissolution Processes:

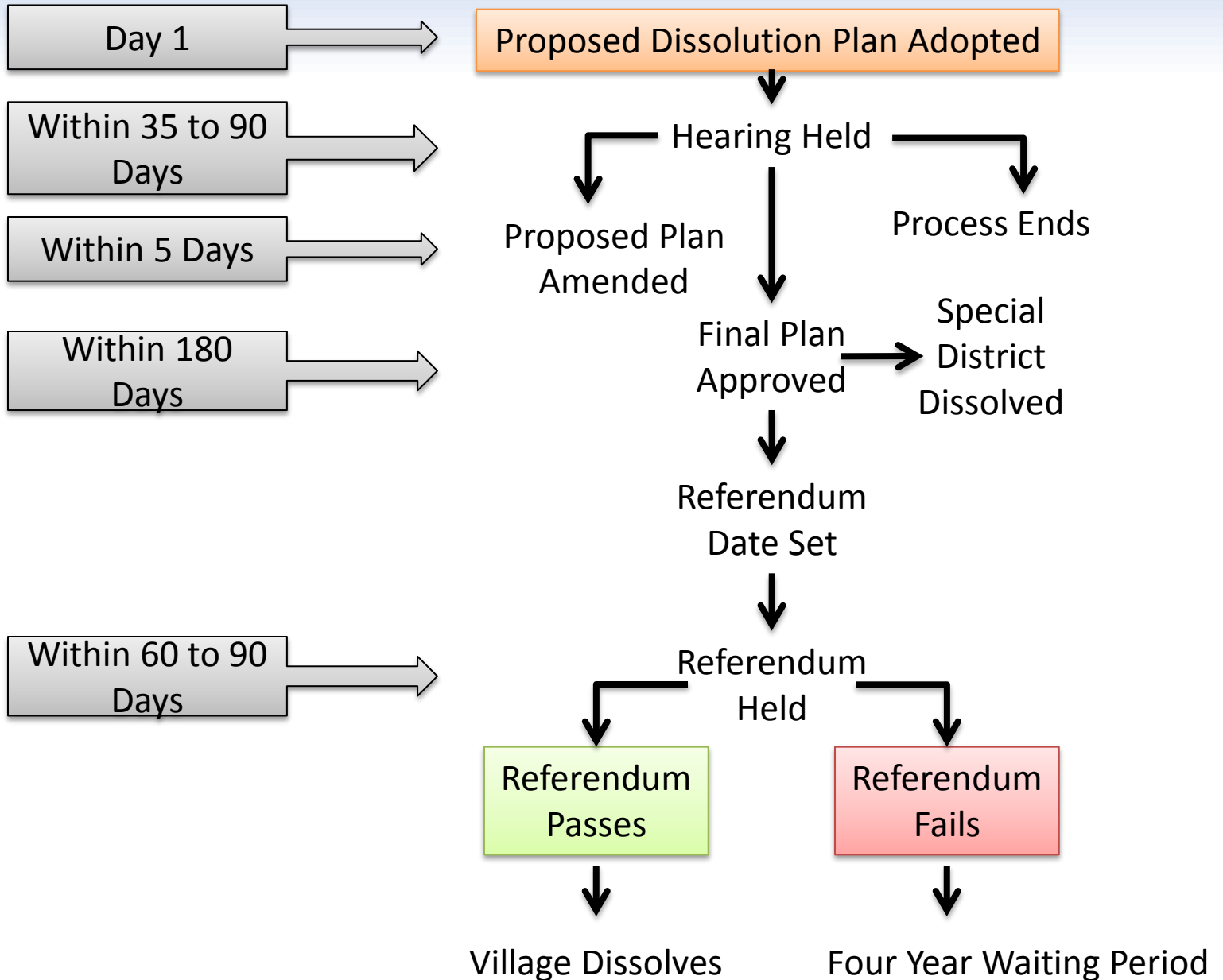
Voter initiated vs. Board initiated

# Voter-Initiated Dissolution





# Board-Initiated Dissolution Process



# Potential Citizens Empowerment Tax Credit

- The Citizens Re-Organization Empowerment Grant (CREG) program assists local governments with dissolution or consolidation. Local governments that complete a municipal re-organization project are eligible for the Citizens Empowerment Tax Credit (CETC). This funding is a separate source of additional annual aid that is awarded in amounts equal to 15% of the combined real property taxes levied by all of the cities, towns, and villages that participated in the re-organization.
- The CETC will be calculated from the tax levies for the last full fiscal year prior to dissolution. Village fiscal years are June-May and Town fiscal years are Jan-Dec.
- **The numbers below are only an estimate.**

	Village (FYE 16-17)	Town (FYE 17)	Total
Tax Levy	\$305,154	\$644,911	\$950,065
Potential Annual Citizens Empowerment Tax Credit (CETC) 15% of Total Tax Levy	-	-	\$142,509*

\* 70% of CETC must be used to reduce property taxes.

The CETC is one source of savings from dissolution. The purpose of this dissolution study is to look at alternatives to current municipal services and service delivery that may result in additional savings.

# Questions or Comments?



Carrie Tuttle, Director of Engineering  
315-661-3259  
[ctuttle@danc.org](mailto:ctuttle@danc.org)

Kevin Schwenzfeier, Department of State  
518-474-7632  
[Kevin.Schwenzfeier@dos.ny.gov](mailto:Kevin.Schwenzfeier@dos.ny.gov)

Star Carter, GIS Supervisor  
315-661-3261  
[scarter@danc.org](mailto:scarter@danc.org)