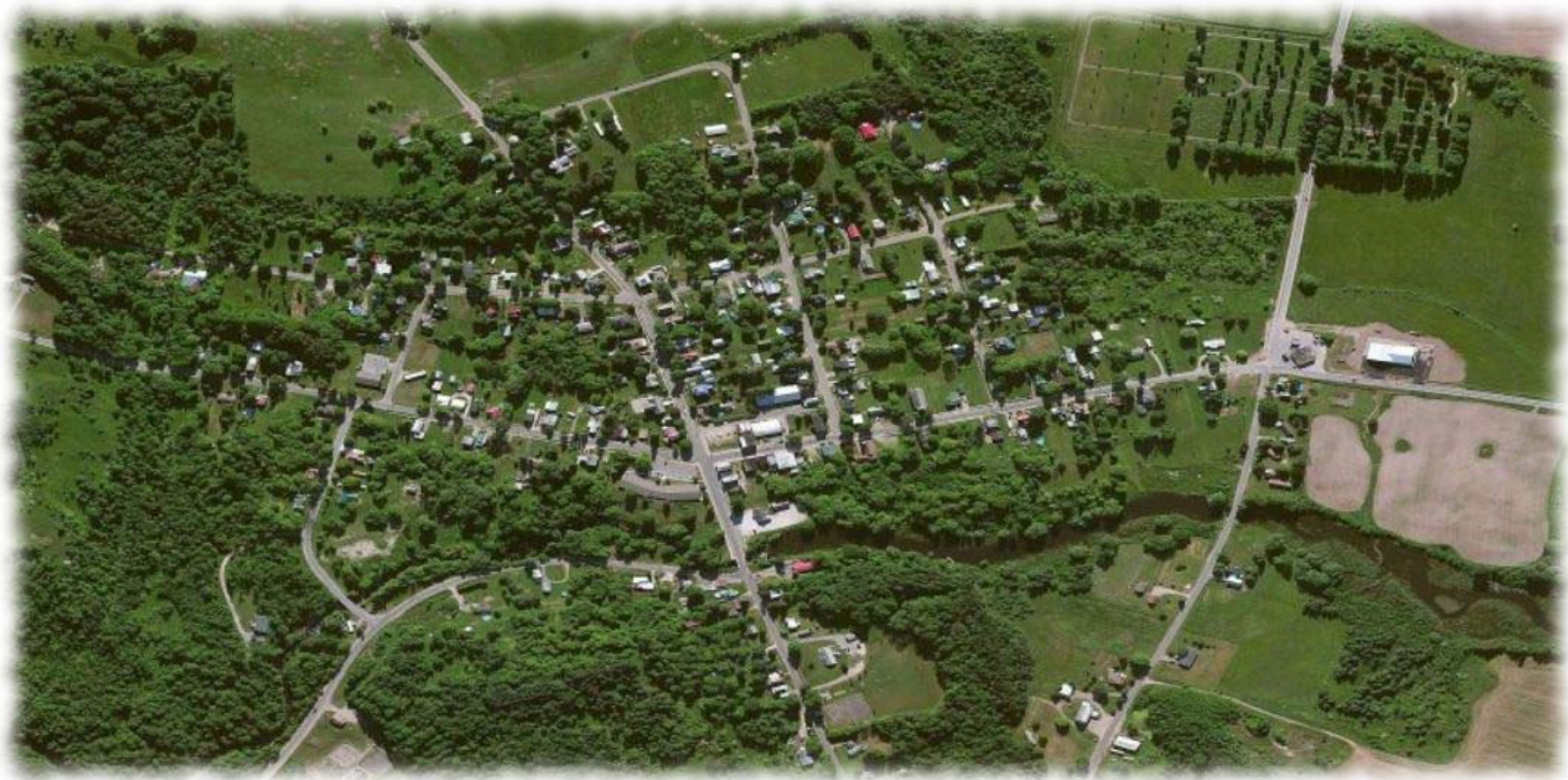


Village of Hermon

Personnel, Budgets & Taxes

October 23, 2014

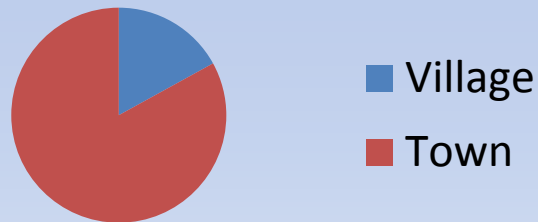


Hermon, NY

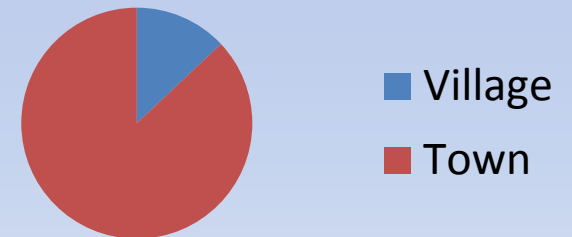
Municipal Budgets & Tax Levy

Budgeted Expenditures & Tax Levies – FY2014/2015 Village & FY2014 Town				
	Total Budgeted Expenditures	% of Total	Tax Levy	% of Total
Village	\$332,100	26%	\$80,543	13%
Town	<u>\$957,402</u>	<u>74%</u>	<u>\$562,947</u>	<u>87%</u>
Total	\$1,289,502	100%	\$643,490	100%

Budget



Tax Levy



Comparison to Edwards

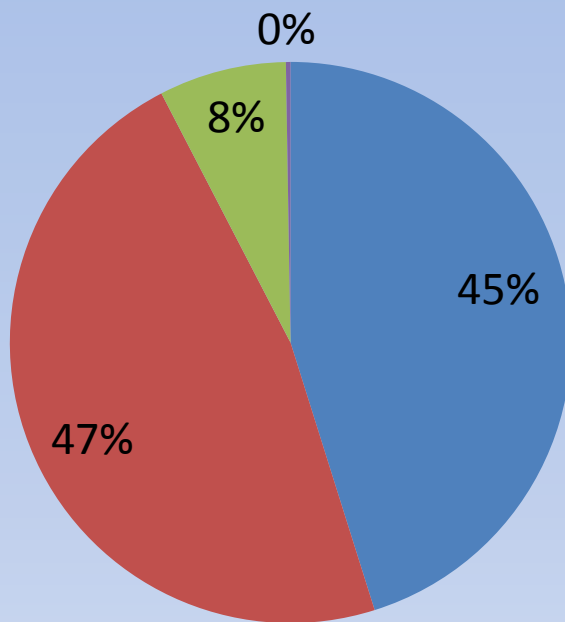
- 1) *Budgeted Expenditures = 21% Village, 79% Town*
- 2) *Tax Levies = 8% Village, 92% Town*

Budgeted Expenditures

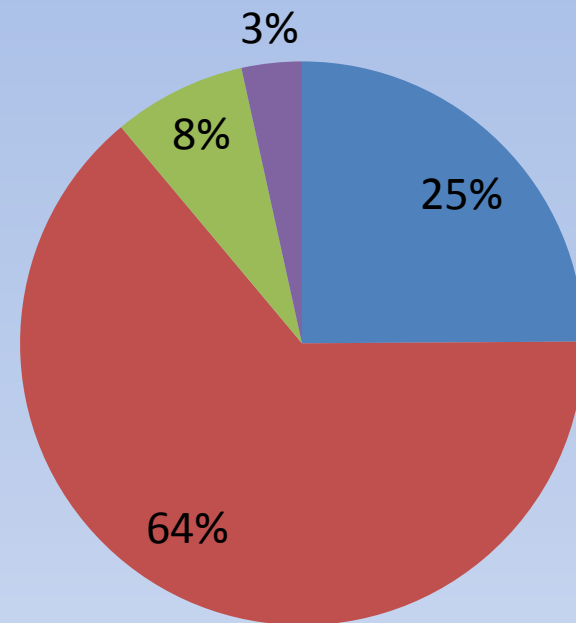
Budgeted Expenditures – FY14/15 Village & FY14 Town			
	Village	Town	Total
General	\$86,000	\$238,383	\$324,383
Highway/DPW	\$90,000	\$612,850	\$702,850
Fire	\$14,000	\$73,169	\$87,169
Library	\$500	\$33,000	\$33,500
Street Lighting	\$12,000	-	\$12,000
Water	\$49,750	-	\$49,750
Sewer	<u>\$79,850</u>	-	<u>\$79,850</u>
Total	\$332,100	\$957,402	\$1,289,502

Budgeted Expenditures

Village



Town



■ General ■ Highway/DPW ■ Fire ■ Library

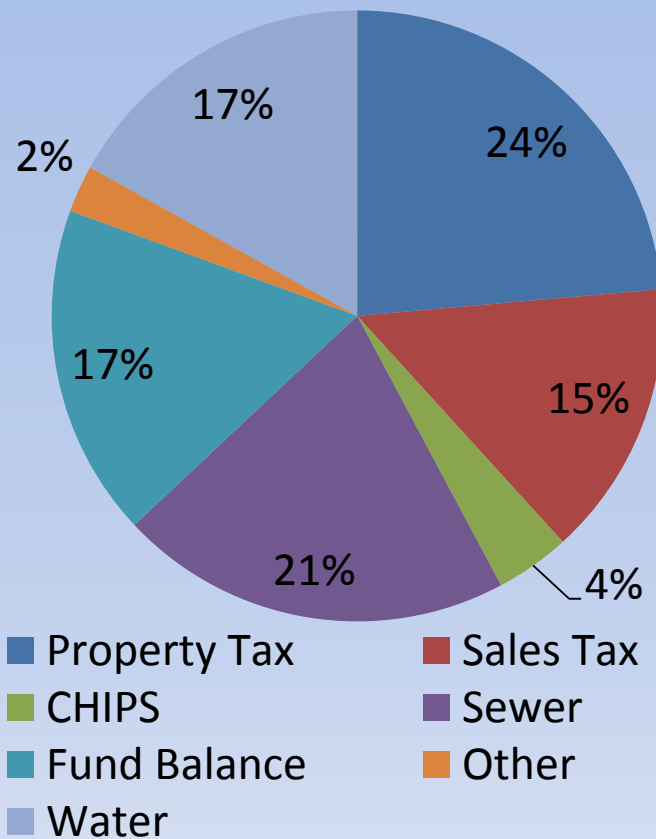
Budgeted Revenues

Budgeted Revenues – FY14/15 Village & FY14 Town			
	Village	Town	Total
Raised by Property Tax	\$80,543	\$489,778	\$570,321
Raised by Sales Tax	\$50,000	\$170,000	\$220,000
County		\$99,177	\$99,177
CHIPS	\$13,450	\$90,100	\$103,550
Other Sources	\$8,507	\$35,178	\$43,685
Fire	-	\$73,169	\$73,169
Water	\$57,755	-	\$57,755
Sewer	\$71,006	-	\$71,006
Unexpended Fund Balance	\$60,000*		\$60,000
Total	\$341,261	\$957,402	\$1,298,663

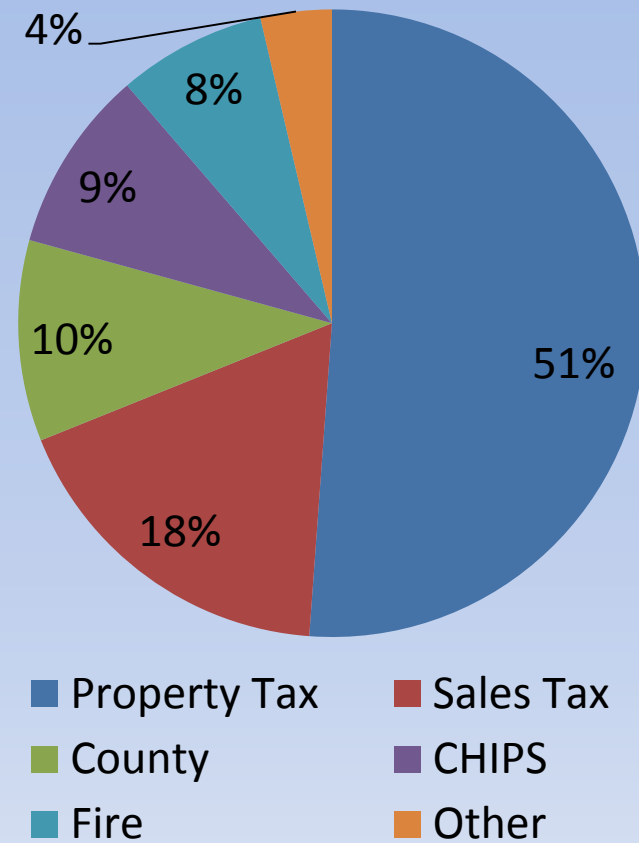
* \$50,000 from General Fund and \$10,000 from Sewer Fund

Budgeted Revenue

Village



Town



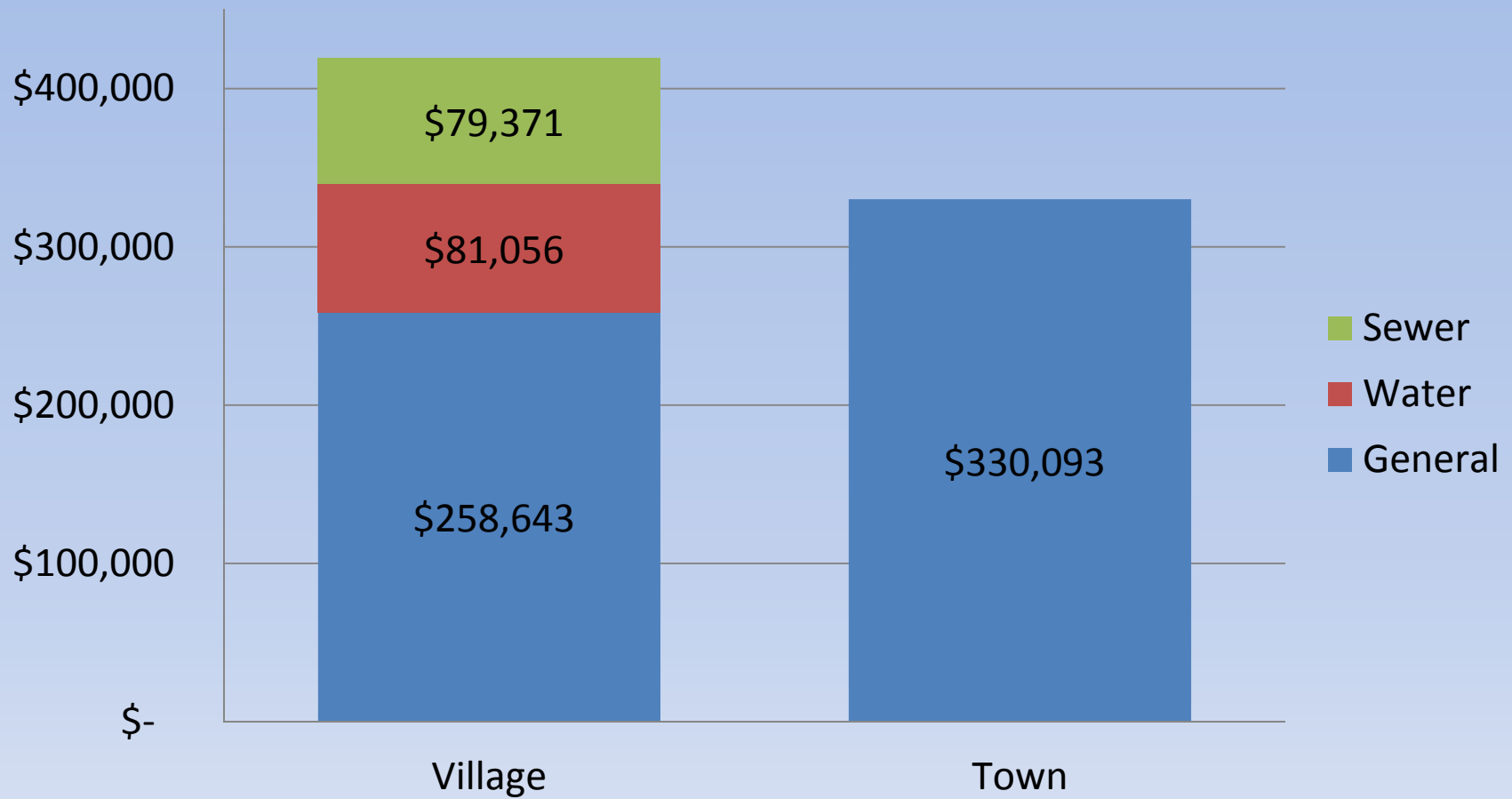
Fund Balances

Fund Balances – As of 5/31/14 (Village); As of 12/31/12 (Town)		
	Fund/Purpose	Balance
Village	General	\$258,643
	Water	\$81,056
	Sewer	<u>\$79,371</u>
	Total	\$419,070
Town	General	<u>\$330,093</u>
Total		\$749,162

Comparison to Edwards 5/31/10

- 1) Village Total = \$81,138
- 2) Town Total \$409,047

Fund Balance



Debt Levels

Outstanding Debt – As of 5/31/14 (Village); As of 12/31/12 (Town)		
	Fund/Purpose	Balance
Village	General	\$0
	Water	\$0
	Sewer	\$133,400
	Total	\$133,400
Town	General	<u>\$0</u>
Total		\$133,400

Debt Levels



Employee Staffing

	Village	Town	Total
Mayor/Supervisor	1	1	2
Trustees/Council Members	4	4	8
Clerk/Treasurer	1 PT	1 PT	2 PT
Highway/DPW	1 PT (DPW employee also does water)	5	5 FT, 1 PT
Sewer	1 PT	-	1 PT
Code Enforcement Officer	-	Contracted – 1 PT	1 PT
Assessor	-	Contracted – 1 PT	1 PT
Justice	-	Contracted – 1 PT	1 PT
Total Employees	8	14	22

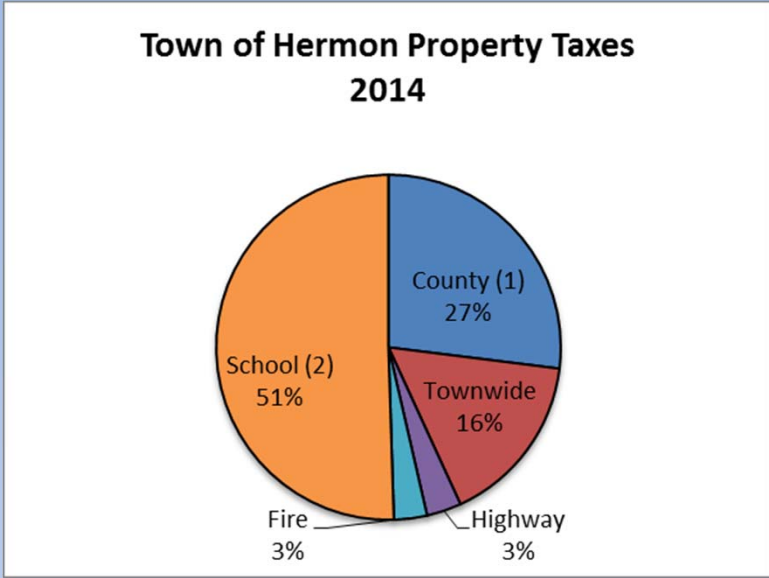
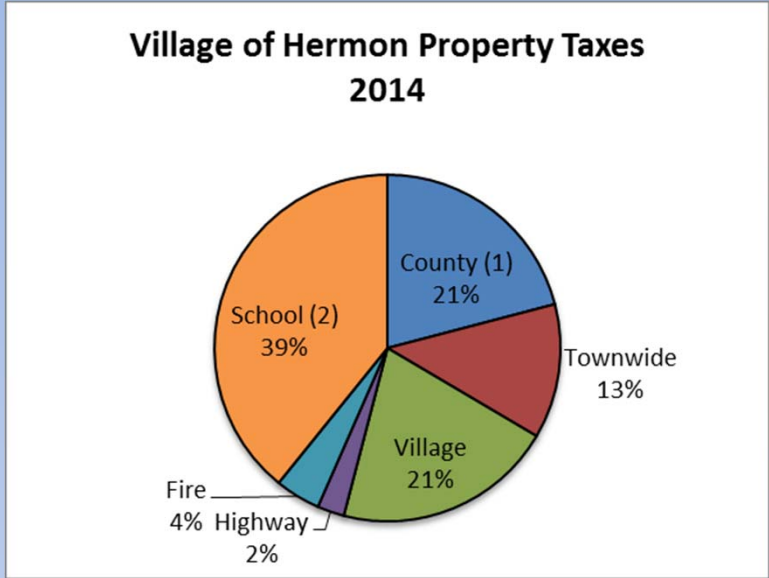
Employee Benefits

Employee Cost By Municipality			
	Village (FY13/14)	Town (FY2012)	Total
Mayor/Spvs	\$1,300	\$10,000	\$11,300
Trustees/Council	\$1,900	\$6,400	\$8,300
Clerk	\$11,900	\$12,200	\$24,100
Water	\$12,200	-	\$12,200
Sewer	\$12,350	-	\$12,350
Highway/DPW	\$13,845	\$195,760	\$209,605
Animal Control	-	\$7,110	\$7,110
Assessor	-	\$11,638	\$11,638
Justice	-	<u>\$7,425</u>	<u>\$7,425</u>
Total Employee Salaries	\$53,495	\$250,533	\$304,028
Total Benefits Paid	\$11,152	\$129,900	\$141,052
<i>Benefits as % of Salary</i>	21%	52%	46%
Total Compensation	\$64,647	\$354,260	\$418,907

Employee Benefits By Dept.

Employee Cost By Municipality			
	Village (FY13/14)	Town (FY2012)	Total
General Fund Employees (including Hwy Super)	\$9,064	\$46,650	\$55,714
Water	\$1,051		\$1,051
Sewer	\$1,037		\$1,037
Highway	-	\$83,250	\$83,250
Total	\$11,152	\$129,900	\$141,052

Tax Information



Current Tax Rates per \$1,000 AV for a Village and TOV Taxpayer (2014)

	Village	TOV
County (1)	\$8.95	\$8.95
Townwide	\$5.37	\$5.37
Village	\$8.81	~
Highway	\$1.08	\$1.08
Fire	\$1.81	\$1.03
School (2)	\$16.76	\$16.76
Total	\$42.78	\$33.19

TOV = Town Outside Village

Source: St. Lawrence County Real Property Office

Notes to the chart:

(1) includes County tax of \$8.372 and County Chargebacks of \$0.580.

(2) Hermon-Dekalb School District 2013 rate

Projected Real Property Tax Benefit

	Village	Town	Total
Actual Tax Levy (2013 from Open Books NY)	\$85,798	\$578,934	\$664,732
Annual Citizens Empowerment Tax Credit (CETC)	-	-	\$99,709.80*
Tax Levy if Village Dissolves & 15% Property Tax Credit is Applied	\$72,928	\$492,094	\$565,022

* 70% of CETC must be used to reduce property taxes.

Comparison to Edwards: \$84,908 for annual "Aid to Municipality"

Estimated CETC Savings for Average Property Owner in Village or Town

	Village	Town
Average Assessed Value from SLC Real Property Database	\$35,922	\$74,252
Average Annual Village and Town Taxes	\$509	\$399
Estimated Savings from CETC (15%)	(\$76)	(\$60)

To compute the estimated savings for any given property, divide the assessed value by \$1,000 and multiple that by \$2.13 for Village properties or \$0.81 for Town properties